

**ROCES**<sup>®</sup>

# Roces' White is Green

*IDEA Ski Boots + Ice Skates*

*GREEN CORE COLLECTION*

*2020 - 2021*



# INDEX

## IDEA SIZE ADJUSTABLE SKI BOOT

- 4 THE IDEA REVOLUTION
- 6 TECH OVERVIEW
- 8 SIZES AND BENEFITS
- 10 IDEA UP 16.0 - 18.5
- 11 IDEA UP 19.0 - 22.0
- 12 IDEA FREE 22.5 - 25.5
- 13 IDEA RENTAL & P.O.P.

## ICE SKATE COLLECTION

- 16 RECYCLE LINE
- 18 SPORT & LEISURE
- 22 KIDS
- 26 ICEGLAMOUR
- 34 FIGURE
- 38 HOCKEY
- 40 ACCESSORIES
- 44 RENTAL

## THE "R cube" CONCEPT: HOW WE SKATE THE PLANET



**R**EDUCE  
REUSE  
RECYCLE

A brand new product program gets a special boost today inspired by the triple **R** of **Reduce, Reuse, Recycle**. Reduction of waste with packaging optimization, reuse of materials for lining, liners, shells, gradual introduction of recycled materials in all the product lines.

### WHAT WE DID

Continuous use of recycled polyurethane for the black skate production (since 1978).

Size adjustability as a market standard for inline and ice skates and recently for junior ski boots, a typical «more with less» design case: less plastic, less waste, dramatically lower impact on transport and logistics.

Milestones:  
[1978] First ice skate made in plastic and it's 100% recycled  
[1993-1994] First ever size adjustable skate  
[2002] Dual skate, only one skate for inline and ice skating.  
[2006] First ever size adjustable ski boot

### WHAT WE DO NOW

Introduction of the RECYCLE line in the ice skate collection (that means use of recycled PET, PU and recycled foams for padding).

Introduction of havana cardboard packaging (and no plastic film coating) and low ink consumption. Today's percentage of recycled cardboard is around 80%.

Ice skate blade covers (meaning the ones coming with the product in the box) made of 100% recycled plastic.

### WHAT WE WILL DO

The goal is the expansion of RECYCLE design inspiration to all product categories and to as many products as possible.

The goal is to reach soon the 100% of recycled cardboard (no plastic film coating) and even lower ink consumption.

The goal is the substitution of all polybags used for product packaging / transport with bags of sustainable material (over 1.000.000 bags less per year).

# HEART FOR EARTH

*We all care about our planet and the brand that introduced size adjustable skates in 1994 and IDEA size adjustable ski boot for children in 2006 is, by far, a long step forward in the battle against the proliferation of landfills.*

*We all need a new HEART FOR EARTH*



**JUST 3 BOOTS  
COVERING  
FROM SIZE MP 16.0  
TO SIZE MP 25.5**

**ALWAYS  
THE RIGHT  
SIZE**

# IDEA SKI BOOT OVERVIEW



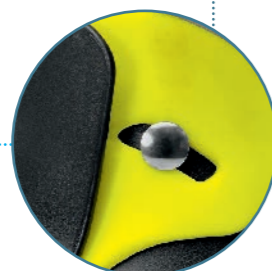
WIDTH GROWTH COMPENSATOR



LINER BELLOWS SYSTEM - LBS



SELF - SETTLING SHELL WRAP



SELF - SETTLING SHELL WRAP



MICRO ADJUSTABLE BUCKLES

ISO 5355 : 2006

## QUALITY AND SAFETY

**ENG** The variety of materials and technology used in manufacturing have made IDEA a high quality boot perfectly suited to introducing children to the sport of skiing in an easy, technically efficient and absolutely safe manner.

**ITA** Tutte le componenti che assemblano IDEA utilizzano i migliori materiali con i quali si producono gli scarponi di ultima generazione, ideali per avviare allo sci in modo tecnicamente valido e sicuro.

**DEU** Alle Teile, aus denen IDEA besteht, sind vom besten, jemals in der Skischuhproduktion verwendeten Material gefertigt, um unseren Kindern einen total sicheren und technisch richtigen Einstieg in das Skifahren zu ermöglichen.

**FRA** Tous les composants de l'IDEA sont fait avec les meilleurs matériaux utilisés pour les chaussures de ski dernière génération, permettant de garantir aux enfants une pratique du ski sûre et technique.

**Shell:** Polypropylene (PP)  
**Buckles:** Aluminum (ALU) and Polycarbonate (PC)  
**Pad:** Slow memory foam  
**Lining:** Easy Entry System Lycra and velvet

**Scafo:** Polypropylene (PP)  
**Leve:** Alluminio (ALU), Polycarbonato (PC)  
**Imbottitura:** agglomerato Slow-memory foam  
**Fodera:** Lycra per Easy Entry System, Velvet (Vellutino)

**Schale:** Polypropylene (PP)  
**Schnallen:** Aluminium (ALU) und Polycarbonat (PC)  
**Polsterung:** langsam anpassender Memory Foam  
**Futter:** Easy Entry System Lycra und Samt

**Coque:** Polypropylene (PP)  
**Boucle:** Aluminium (alu) et Polycarbonate (PC)  
**Garniture:** mousse agglomérée à mémoire de forme  
**Doubleure:** système d'enfilage facile Lycra et velours



## LENGTH GROWTH COMPENSATOR

**ENG** The "6 in 1" system is unbelievably easy to use: to select the right length you just need to rotate the lever placed on the lower part of the boot (close to the heel) to the chosen size.

1. Open the buckles of your boot;
2. Rotate the lever to reach the desired size;
3. Close the lever to the proper peg.

**ITA** Il sistema "6 in 1" è semplicissimo: per scegliere la taglia basta ruotare un'unica leva posta nella parte bassa dello scarpono.

1. Allentare le leve dello scarpono;
2. Ruotare la leva di regolazione fino a raggiungere la misura desiderata;
3. Bloccare la leva di regolazione nell'apposito piolo.

**DEU** Das "6 in 1" Verstellsystem ist unglaublich einfach zu bedienen: um die richtige Länge auszuwählen muß man nur den Hebel, der am unteren Teil des Schuhs platziert ist (nahe der Ferse), auf die gewünschte Größe drehen.

1. Die Schnallen des Schuhs öffnen;
2. Den Hebel drehen, bis die gewünschte Größe erreicht ist;
3. Den Hebel zurücklegen um die Größe zu fixieren.

**FRA** Le système "6 en 1" est simplissime: pour choisir la taille, il suffit de faire pivoter un unique levier situé dans la partie basse de la chaussure (près du talon).

1. Ouvrir les boucles de la chaussure;
2. Tourner le levier de réglage jusqu'à la taille désirée;
3. Replacer le levier et le bloquer grâce au petit ergot.

## LINER BELLOWS SYSTEM "LBS"

**ENG** The staple feature of IDEA's liner is a unique adjusting system. Unlike any other system today the bellows allow real growth of the liner allowing for the natural development of the foot. The Liner Bellows System (LBS) has been devised to avoid any uncomfortable pressure through all parts of the foot. The bellows (LBS) system allows the liner and shell to work in tandem to produce a fit that is accurate, comfortable and warm.

In fact the natural/resting position of the liner is with the bellows extended to the largest size (PIC. A), while shortening the shell makes the bellows compress (PIC. B) into smaller sizes. It is easy to see that it is not the foot that makes the liner grow, but the shell itself.

**ITA** La scarpetta di IDEA è a taglia variabile grazie al sistema LBS, basato su un soffietto a fisarmonica che rispetta la crescita del piede ed evita pressioni o altri discomfort sulle dita, sulle caviglie e sull'arco plantare. Quando lo scafo è regolato sulla taglia più grande, il sistema LBS si presenta a riposo e nella sua estensione massima (PIC. A); solo con l'accorciarsi dello scafo la fisarmonica si comprime (PIC. B) adattandosi alle taglie inferiori. Non è il piede ad allungare innaturalmente la scarpetta, bensì l'azione dello scafo che comprime o rilascia la fisarmonica.

**DEU** Das Hauptmerkmal des größenanpassungsfähigen IDEA Innenschuhs ist außergewöhnlich und einzigartig! Anders als die meisten der erhältlichen "Fake"-Systeme, die vortäuschen, größenanpassungsfähig zu sein, ermöglicht der IDEA Innenschuh durch ein ziehharmonikaähnliches System eine wirkliche Größenverstellung bei gleichzeitiger Rücksichtnahme auf die natürliche Entwicklung des Fußes! Das "Ziehharmonikasytem" (LBS) wurde entwickelt um jeglichen Druck in der Ferse, den Zehen oder unangenehmes Gefühl wo auch immer am Fuß zu vermeiden. Tatsächlich ergibt sich das natürliche, entspannte Gefühl im Innenschuh dadurch, daß der Innenschuh in der größten Größe in der Schale eingesetzt wird (PIC. A) und sich dieser, wenn die Schale auf eine kleinere Größe verstellt wird, zusammenfaltet (PIC. B). Somit ist es leicht zu verstehen, daß nicht der Fuß Druck auf den Innenschuh ausüben muß um die Größe zu verstellen, sondern die Schale diesen Vorgang vornimmt.

**FRA** La principale caractéristique du chausson de l'IDEA est un système d'ajustement unique et particulier qui, à la différence de la majeure partie des «faux» systèmes de réglages disponibles aujourd'hui, utilise un soufflet compensateur permettant une vraie croissance du chausson respectant le développement normal du pied. Le système "LBS" du chausson a été conçu avec comme objectif d'éviter toute pression sur la cheville ou toute autre gêne sur le reste du pied. En fait la position naturelle au repos du chausson est représentée par un soufflet accordéon en extension maximum (PIC. A) et le rétrécissement de la coque comprime le soufflet (PIC. B) sur une taille plus petite. Ainsi il est facile de comprendre que ce n'est pas le pied qui allonge le chausson mais l'action de la coque qui comprime ou allonge le soufflet.



PIC. A



PIC. B





# THE ADJUSTABLE SKI BOOT FOR FAST GROWING KIDS.



We size our environmental impact. Multiple seasons with a single boot: longer use, less waste.

**ENG** The new line is coming with three different models. The IDEA UP covers sizes from 16.0 to 18.5 MP and sizes from 19.0 to 22.0 MP while the new charming IDEA FREE covers sizes from 22.5 to 25.5 MP. These three items correspond to three new lines differentiated under the closure system standpoint. The IDEA UP 16.0-18.5 is a single buckled traditional construction shelled boot while the IDEA UP 19.0-22.0 is a new two buckled boot provided with a special water shell sealing layer. IDEA FREE 22.5-25.5 is the new three buckled and cuff Power Strap strapped boot, provided with a special water shell sealing layer.

**ITA** L'ultima generazione di IDEA è composta da tre varianti differenti. IDEA UP copre le taglie più piccole (16.0-18.5 MP e 19.0-22.0 MP) mentre il nuovo IDEA FREE copre le taglie più grandi (22.5-25.5 MP). Queste tre varianti corrispondono ai tre nuovi modelli, che differiscono tra loro per il sistema di chiusura. IDEA UP 16.0-18.5 possiede, infatti, un unico gancio di chiusura mentre IDEA UP 19.0-22.0 monta, su un nuovo scafo dotato di uno speciale inserto impermeabilizzante contro le infiltrazioni, un sistema di chiusura a due ganci. IDEA FREE 22.5-25.5, infine, è dotato del medesimo scafo ad alta tenuta contro le infiltrazioni e di un sistema di chiusura composto da tre ganci più un'ulteriore chiusura in Power Strap.

**DEU** Die neue Range besteht aus drei verschiedenen Modelltypen. Das Modell IDEA UP deckt mit 2 Schalen die Größen MP 16.0 bis 18.5 (EU 25-29) und MP 19.0 bis 22.0 (EU 30-35) ab. Das obere Größenspektrum von MP 22.5 bis 25.5 (EU 36-40) bedient das Modell IDEA FREE. Diese drei neuen Modelle unterscheiden sich im Wesentlichen über ihr Verschlusssystem. Die kleinste Größe, der IDEA UP (EU 25-29), ist eine traditionelle 1-Schnaller Konstruktion für Kinder, während sich die mittlere Größe (EU 30-35) als eine neue 2-Schnaller Konstruktion mit einem speziellen, wasserabweisenden Layer präsentiert. Das Modell IDEA FREE (EU 36-40) mit 3 Schnallen und einem Power Strap Topverschluss wurde völlig neu konzipiert. Auch hier kommt das „Water-Shell-Sealing-Layer“ zum Einsatz.

**FRA** La nouvelle ligne arrive avec 3 modèles différents. IDEA UP couvre les tailles de 16.0 à 18.5 MP et 19.0 à 22.0 MP alors que IDEA FREE couvre les tailles de 22.5 à 25.5 MP. Ces trois références correspondent aux trois nouvelles lignes différentes du point de vue du système de fermeture. IDEA UP 16.0-18.5 a une construction traditionnelle et une seule boucle de fermeture, alors que IDEA UP 19.0-22.0 est une nouvelle chaussure avec double boucle de fermeture et une couche d'étanchéité supplémentaire au niveau de la coque. IDEA FREE 22.5-25.5 est une nouvelle chaussure avec 3 boucles de fermeture, un strap Power Strap au niveau de la cheville et une couche d'étanchéité supplémentaire au niveau de la coque.

## IDEA UP AND IDEA FREE

### INSPIRATIONAL DESIGN

**ENG** The new three lines are differentiated also under the inspiration standpoint and the design guidelines were inspired by freeride, freestyle and backcountry.

**ITA** La nuova generazione IDEA si differenzia dalla precedente anche dal punto di vista del design. Le linee guida di progettazione sono ispirate al free ride, al freestyle e al back country.

**DEU** Die drei Modelle sind in Ihrem Design kategorisch unterschiedlich inspiriert. So finden sich Elemente aus Freeride, Freestyle und Backcountry.

**FRA** Les trois nouvelles lignes sont différentes du point de vue de l'inspiration et les lignes directrices de conception ont été inspirées par le freeride, le freestyle et le backcountry.

### IMPROVED FLEX INDEX

**ENG** Lot of research efforts were put on bettering the flex index and the achievement is now confirmed from a fruitful cooperation with ski instructors, ski schools and ski clubs.

**ITA** Con importanti risorse dedicate alla ricerca si è raggiunto l'obiettivo di migliorare il flex dello scarpone anche grazie a una stretta collaborazione con maestri di sci, scuole di sci e sci club.

**DEU** Besondere Aufmerksamkeit haben wir der Optimierung des Flexverhaltens beigemessen. In Zusammenarbeit mit Skilehrern, Skischulen und Vereinen wurden die Anforderungen von Kindern und Jugendlichen praxisbezogen umgesetzt.

**FRA** Beaucoup d'efforts de recherche ont été entrepris pour améliorer l'indice flex et la réalisation est maintenant confirmée grâce à une coopération fructueuse avec les moniteurs de ski, les écoles de ski et les clubs de ski.

### TOTAL PROTECTION

**ENG** All the new line is provided with a special water shell sealing layer that proves to be an effective barrier against water and snow. If the first generation of IDEA proved to be 100% water protective, the new one is still 100% protective with the additional guarantee of the special layer.

**ITA** Se la prima generazione di IDEA si è dimostrata essere al 100% resistente alle infiltrazioni, con la seconda generazione Roces siamo al 100% di garanzia con l'ulteriore aggiunta di uno speciale inserto impermeabilizzante che funge da barriera contro infiltrazioni. Funzionalità e design si integrano.

**DEU** Alle Modelle der neuen Range sind mit einem speziellen "Water Shell Sealing Layer", einer funktionell effektiv wasserabweisenden Schicht, gegen Wasser und Schnee ausgestattet. Nachdem bereits die erste Generation IDEA konstruktionsbedingt hoch verlässlich gegen Wassereintritt war, bietet dieses neue Feature nun nochmals zusätzlichen Schutz.

**FRA** Toute la nouvelle ligne possède une couche d'étanchéité spéciale de la coque qui se révèle être une barrière efficace contre l'eau et la neige. Si la première génération de l'IDEA s'est avérée être 100% étanche à l'eau, cette nouvelle génération l'est toujours mais avec une garantie supplémentaire grâce de la couche spéciale d'étanchéité.

### NEW DESIGN IN LONG TESTED LASTS

**ENG** The lasts have been tested for years and proved to be comfortable and very well accepted by all foot anatomies.

**ITA** L'ultima generazione di scarponi è frutto non solo di un'esperienza di anni ma anche di una lunga serie di test che hanno dimostrato come la geometria dello scarpone IDEA sia confortevole e adatta per ogni conformazione anatomica

**DEU** Unsere verwendeten Leisten haben sich über Jahre hinsichtlich Passform und höchster Bequemlichkeit hundertausendfach bewährt. Orientiert an der Anatomie von Kinderfüßen.

**FRA** Les chaussons ont été testés pendant des années, ils sont très confortables et très bien acceptés quelque soit l'anatomie du pied.

### SAVE THE NATURAL FOOT HEAT

**ENG** The new warmer and anatomically padded liner has been aesthetically improved. On one side it saves the natural heat produced by the foot while skiing while on the other the liner is able to keep the foot warm also during breaks.

**ITA** La nuova scarpetta imbottita anatomicamente è stata migliorata sia dal punto di vista estetico che in termini di tenuta del calore. La nuova conformazione della scarpetta permette, infatti, di mantenere anche nei momenti di pausa il calore naturale prodotto dal nostro corpo durante l'attività fisica.

**DEU** Auch der Innenschuh wurde in mehrfacher Hinsicht überarbeitet: Die neue Version ist aufgrund neuer Materialien nun ästhetisch ansprechender – das Hauptaugenmerk liegt jedoch auf konstanter Wärmeisolierung. Die neue Konstruktion speichert die während des Fahrens anfallende Wärme im Schuh und behält sie auch während kurzer Pausen.

**FRA** Le nouveau chausson rembourré chaud et anatomique a été esthétiquement amélioré. D'un côté, il préserve la chaleur naturelle produite par le pied lorsque vous faites du ski et de l'autre il est en mesure de conserver la chaleur du pied aussi pendant les pauses.

### SELF - SETTLING SHELL WRAP

**ENG** Designed and studied to improve the ankle-foot wrapping and the progressive flexure, placed in between the frontal shell overlapping it enhances the comfort and snow stopping guarantee of the special layer.

**ITA** Sviluppato per migliorare l'avvolgimento attorno alla caviglia e il flex progressivo, è collocato tra scafo e scarpetta e dona ottimo comfort eliminando le possibili infiltrazioni.

**DEU** Der überarbeitete Schaft bietet durch seine spezielle Bauweise optimalen Halt und Schutz für das Sprunggelenk bei gleichzeitig progressivem Flex. Er bildet die überlappende Schnittstelle zur unteren Schale und Zunge und ist somit maßgeblich für den Komfort und den Schutz vor Schnee.

**FRA** Conçu et étudié pour améliorer la couverture cheville-pied et la flexion progressive, placé entre au niveau du chevauchement de la coque frontale, il améliore le confort et l'arrêt de la neige.



160 165 170 175 180 185 190 195 200 205 210 215 220 225 230 235 240 245 250 255

IDEA UP size 16.0 - 18.5

IDEA UP size 19.0 - 22.0

IDEA FREE size 22.5 - 25.5

185 ● ● 160  
180 ● ● 170

220 ● ● 190  
210 ● ● 200

255 ● ● 225  
245 ● ● 235



IDEA UP

sizes 16.0 - 18.5  
ADJUSTABLE

- LENGTH G.C. 110  
LENGTH GROWTH COMPENSATOR 6 IN 1
- WIDTH G.C. 110  
WIDTH GROWTH COMPENSATOR
- SOLE LENGTH 223 mm  
SOLE LENGTH
- LBS SELF FITTING LINER  
LBS SELF FITTING LINER
- SLOW RECOVERY MEMORY FOAM  
SLOW RECOVERY MEMORY FOAM
- SELF POSITIONING LINER TONGUE  
SELF POSITIONING LINER TONGUE
- SELF-SETTLING SHELL WRAP  
SELF-SETTLING SHELL WRAP
- PP  
SHELL MATERIAL
- ALU PC  
BUCKLE MATERIAL
- MICRO  
MICRO ADJUSTABLE BUCKLE



code 450490 018  
BLACK-LIME



code 450491 023  
WHITE-TEAL



code 450490 008  
BLUE-WHITE



code 450490 009  
DEEP PINK-WHITE



code 450490 015  
WHITE-RED-BLACK



code 450491 009  
DEEP PINK-WHITE



code 450491 015  
WHITE-RED-BLACK



code 450491 018  
BLACK-LIME



code 450491 020  
WHITE-DEEP PINK



code 450491 022  
BLACK-SILVER

# IDEA FREE

sizes 22.5 - 25.5  
ADJUSTABLE

- LENGTH G.C. 110
- WIDTH G.C. 110
- SOLE LENGTH 202 mm
- LBS SELF FITTING LINER
- SLOW RECOVERY MEMORY FOAM
- 30MM POWER STRAP
- SELF POSITIONING LINER TONGUE
- SELF-SETTLING SHELL WRAP
- PP SHELL MATERIAL
- ALU PC BUCKLE MATERIAL
- MICRO ADJUSTABLE BUCKLE



code 450492 024  
TEAL-BLACK



# SIZE SATISFACTION, INVENTORY FRIENDLY.

## A RADICAL CHANGE FOR THE RENTAL BUSINESS.

ENG IDEA is the perfect solution for leasing and rentals, it can satisfy plenty of requests with only 3 models in stock minimizing inventory and maximizing profit.

ITA IDEA è ideale anche per il noleggio. È possibile, infatti, soddisfare tutte le richieste di taglia con solo tre modelli da tenere a magazzino. Questo permette di facilitare enormemente gli ordini e la logistica del lavoro con un risparmio di tempo e una maggiore semplicità organizzativa. E, inoltre, evita di dover regolare l'attacco degli sci a ogni noleggio.

DEU Das IDEA Konzept paßt hervorragend zu Verleihern! Als Verleiher haben Sie nur drei Modelle am Lager und decken damit alle Größen ab. Sie haben einfach IMMER DIE RICHTIGE GRÖSSE AM LAGER! Sie können vermehrte Nachfrage perfekt abdecken ohne für jeden Schuh die Bindung neu einstellen zu müssen.

FRA IDEA est pratique pour les loueurs, car avec 3 modèles en stock, ils peuvent satisfaire toutes les demandes et éviter à chaque location de devoir régler les fixations.

### TRADITIONAL RENTAL BUSINESS MODEL



- COMPLEX STOCK MANAGEMENT
- NEED TO ADJUST BINDINGS
- SOME CUSTOMERS MAY NOT BE SATISFIED WITH THEIR SIZE

### ROCES IDEA RENTAL BUSINESS MODEL



size 19.0 → 22.0

- EASIER STOCK MANAGEMENT
- FIXED SOLE, NO NEED TO ADJUST BINDINGS
- ALWAYS THE RIGHT SIZE



code 450492 015  
WHITE-RED-BLACK

code 450492 018  
BLACK-LIME

code 450492 020  
WHITE-DEEP PINK

code 450492 022  
BLACK-SILVER

code 450492 023  
WHITE-TEAL



ITS SOLE MINIMIZES BINDING ADJUSTMENTS

ISO 5355 : 2006

# IDEA POP



SHOP TAG



CROWNER

# ICE SKATES

with an environmental attitude



*ROCES' WHITE IS GREEN*

*THE "R cube" CONCEPT:  
HOW WE SKATE THE PLANET*



Skating with more respect >>



NEW 2020/21

REDUCE  
REUSE  
RECYCLE

# RECYCLE LINE

Almost all the components have been studied and made with recycled and recyclable materials. A line of high-performance and completely environmentally friendly skates.



- ENG**
- Upper and tongue in recycled PET
  - Anatomical padding in recycled PU
  - Lining in recycled PET and recycled PU fibers
  - Lace closure system and Recycled PU power strap
  - Anatomic footbed
  - Stainless steel hockey blade
- DEU**
- Obermaterial und Zunge aus recyceltem PET
  - Anatomische Polsterung aus recyceltem PU
  - Futter aus recycelten PET- und PU-Fasern
  - Schnürverschluss-System und Recycelte PU Power Strap
  - Anatomisches Fußbett
  - Hockeykufe aus Edelstahl
- ITA**
- Tomaia e linguetta in PET riciclato
  - Imbottitura anatomica in PU riciclato
  - Rivestimento in PET riciclato e fibre PU riciclate
  - Sistema di chiusura a lacci e Power Strap in PU riciclato
  - Plantare anatomico
  - Lama hockey in acciaio inossidabile

FROM RECYCLED RECYCLABLE  
code 450716 001

sizes EU 28-47; UK 10,5jr-12;  
US 11,5jr-13; MP 180-305

RSK 2  
RECYCLE



FROM RECYCLED RECYCLABLE  
code 450714 002

FROM RECYCLED RECYCLABLE  
code 450714 003

FROM RECYCLED RECYCLABLE  
code 450714 001

- ENG**
- Upper and tongue in recycled PET
  - Anatomical padding in recycled PU
  - Lining in recycled PET and recycled PU fibers
  - Lace closure system
  - Recycled&recyclable PVC sole
  - Anatomic footbed
  - Stainless Steel figure blade
- DEU**
- Obermaterial und Zunge aus recyceltem PET
  - Anatomische Polsterung aus recyceltem PU
  - Futter aus recycelten PET- und PU-Fasern
  - Schnürsenkel-Verschluss-System
  - Recycelte&recyclbare PVC-Sohle
  - Anatomisches Fußbett
  - Edelstahl-Kunstlaufkufen
- ITA**
- Tomaia e linguetta in PET riciclato
  - Imbottitura anatomica in PU riciclato
  - Rivestimento in PET riciclato e fibre PU riciclate
  - Sistema di chiusura a lacci
  - Suola in PVC riciclato e riciclabile
  - Plantare anatomico
  - Lama figura in acciaio inossidabile

sizes EU 25-45; UK 8jr-10;  
US 9jr-11; MP 165-290

RFG 1  
RECYCLE



FROM RECYCLED RECYCLABLE  
code 450715 002

FROM RECYCLED RECYCLABLE  
code 450715 001

sizes EU 25-45; UK 8jr-10;  
US 9jr-11; MP 165-290

PARADISE  
RECYCLE

- ENG**
- Upper and tongue in recycled PU
  - Anatomical padding in recycled PU
  - Lining in recycled PET and recycled PU fibers
  - Anatomic footbed
  - Recycled&recyclable PVC sole
  - Lace closure system
  - Stainless steel figure blade
- DEU**
- Obermaterial und Zunge aus recyceltem PU
  - Anatomische Polsterung aus recyceltem PU
  - Futter aus recycelten PET- und PU-Fasern
  - Anatomisches Fußbett
  - Recycelte&recyclbare PVC-Sohle
  - Schnürsenkel-Verschluss-System
  - Edelstahl-Kunstlaufkufen
- ITA**
- Tomaia e linguetta in PU riciclato
  - Imbottitura anatomica in PU riciclato
  - Rivestimento in PET riciclato e fibre PU riciclate
  - Plantare anatomico
  - Suola in PVC riciclato e riciclabile
  - Sistema di chiusura a lacci
  - Lama figura in acciaio inossidabile



# SPORT & LEISURE

## SPORT & LEISURE

### ICY 3

sizes EU 36-49; UK 3-14; US 4-15; MP 230-315



- ENG**
- PP+GF shell and PP cuff
  - Laces with Fast Fastening, Power Strap and microadjustable Memory buckle
  - Anatomic thermal – insulation comfort liner
  - Removable anatomic footbed
  - Stainless steel hockey blade
- DEU**
- Schale aus PP+GF und Schaft aus PP
  - Schnürung, Power Strap und feinjustierbare Memory-Schnalle
  - Anatomisch geformter und wärmeisolierender Innenschuh
  - Anatomisch geformte Einlegesohle, herausnehmbar
  - Hockeyschiene aus rostfreiem Stahl
- ITA**
- Scafo in PP+GF e gambetto in PP
  - Lacci, Power Strap e leva memory millimetrica
  - Scarpetta confortevole anatomica e termoisolante
  - Plantare anatomico estraibile
  - Lama hockey in acciaio inossidabile



code 450620 003

## SPORT & LEISURE

### BIG ICY

sizes EU 50-52; UK 15-17; US 16-18; MP 325-345



- ENG**
- PP+GF shell and PP cuff
  - Laces with Fast Fastening, Power Strap and microadjustable Memory buckle
  - Anatomic thermal – insulation comfort liner
  - Removable anatomic footbed
  - Stainless steel hockey blade
  - **Big size skate**
- DEU**
- Schale aus PP+GF und Schaft aus PP
  - Schnürung, Power Strap und feinjustierbare Memory-Schnalle
  - Anatomisch geformter und wärmeisolierender Innenschuh
  - Anatomisch geformte Einlegesohle, herausnehmbar
  - Hockeyschiene aus rostfreiem Stahl
  - **Big size skate**
- ITA**
- Scafo in PP+GF e gambetto in PP
  - Lacci, Power Strap e leva memory millimetrica
  - Scarpetta confortevole anatomica e termoisolante
  - Plantare anatomico estraibile
  - Lama hockey in acciaio inossidabile
  - **Big size skate**



BIG SIZE SKATE



code 450680 001

## SPORT & LEISURE

# RFG 1

sizes EU 25-45; UK 8jr-10;  
US 9jr-11; MP 165-290

### ENG

- Reinforced synthetic upper, anatomic padding
- Footbed
- Lace closure system
- Stainless steel figure blade

### DEU

- Kunstlederschuh mit anatomisch geformten Verstärkungen, anatomische Polsterung
- Einlegesohle
- Schnürung
- Kunstlaufschiene aus rostfreiem Stahl

### ITA

- Tomaia in sintetico con rinforzi sagomati; imbottitura anatomica
- Plantare
- Chiusura a lacci
- Lama figura in acciaio inossidabile



## SPORT & LEISURE

# PODIO

sizes EU 28-47; UK 10, 5jr-12;  
US 11, 5jr-13; MP 180-305

### ENG

- Reinforced synthetic upper, anatomic padding
- Footbed
- Lace closure system
- Professional race blade in stainless steel

### DEU

- Kunstlederschuh mit anatomisch geformten Verstärkungen, anatomische Polsterung
- Einlegesohle
- Schnürung
- Professionelle Schnellaufschiene aus rostfreiem Stahl

### ITA

- Tomaia in sintetico con rinforzi sagomati; imbottitura anatomica
- Plantare
- Chiusura a lacci
- Lama professionale da velocità in acciaio inossidabile



## SPORT & LEISURE

# RSK 2

sizes EU 28-47; UK 10, 5jr-12;  
US 11, 5jr-13; MP 180-305

### ENG

- Reinforced synthetic upper, anatomic padding
- Footbed
- Lace and Power Strap closure system
- Stainless steel hockey blade

### DEU

- Kunstlederschuh mit anatomisch geformten Verstärkungen, anatomische Polsterung
- Einlegesohle
- Schnürungs- und Power Strapschnalle
- Hockeyschiene aus rostfreiem Stahl

### ITA

- Tomaia in sintetico con rinforzi sagomati; imbottitura anatomica
- Plantare
- Chiusura a lacci con Power Strap
- Lama hockey in acciaio inossidabile



## SPORT & LEISURE

# SPEED RACER

sizes EU 36-49; UK 3-14;  
US 4-15; MP 230-315

### ENG

- HGPU shell and cuff
- Laces and micro-adjustable buckle closure system
- Removable anatomic thermal-insulation liner
- Removable footbed
- Professional race blade in stainless steel

### DEU

- Schale und Schaft aus High Grade Polyurethan
- Verschluss durch Schnürung und feinregulierbare Rasterschnalle
- Anatomisch geformter, herausnehmbarer und wärmeisolierender Innenschuh
- Einlegesohle, herausnehmbar
- Professionelle Schnellaufschiene aus rostfreiem Stahl

### ITA

- Scafo e gambetto in HGPU
- Lacci e leva micrometrica
- Scarpetta anatomica removibile e termoisolante
- Plantare estraibile
- Lama professionale da velocità in acciaio inossidabile



# KIDS



## MOODY ICE 3.0 BOY

sizes EU [30-35] [36-40]; UK [12jr-2] [3-6];  
US [13jr-3] [4-7]; MP [190-220] [230-255]

ADJUSTABLE



### ENG

- HQ Polypropylene shell (micro-adjustable)
- Memory Buckle, Power Strap, Laces
- Liner: anatomically padded, EES Easy Entry System
- Anatomical footbed
- Stainless steel Moon blade

### DEU

- Schale aus Glasfaser verstärktes HQ Polypropylen
- Memory Schnalle, Power Strap, Schnürsenkeln
- Innenschuh: herausnehmbar, Anatomische Polsterung, EES Easy Entry System
- Roces Kid Einlegesohle
- Hockeyschiene aus rostfreiem Stahl

### ITA

- Scafo HQ polipropilene rinforzato con fibra di vetro
- Leva Memory, Power Strap, lacci
- Scarpetta: imbottita anatomicamente, removibile, EES Easy Entry System
- Plantare Roces kid
- Lama hockey in acciaio inossidabile



NEW

## MOODY ICE 3.0 GIRL

sizes EU [30-35] [36-40]; UK [12jr-2] [3-6];  
US [13jr-3] [4-7]; MP [190-220] [230-255]

ADJUSTABLE



### ENG

- HQ Polypropylene shell (micro-adjustable)
- Memory Buckle, Power Strap, Laces
- Liner: anatomically padded, EES Easy Entry System
- Anatomical footbed
- Stainless steel Moon blade

### DEU

- Schale aus Glasfaser verstärktes HQ Polypropylen
- Memory Schnalle, Power Strap, Schnürsenkeln
- Innenschuh: herausnehmbar, Anatomische Polsterung, EES Easy Entry System
- Roces Kid Einlegesohle
- Hockeyschiene aus rostfreiem Stahl

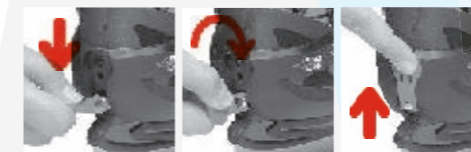
### ITA

- Scafo HQ polipropilene rinforzato con fibra di vetro
- Leva Memory, Power Strap, lacci
- Scarpetta: imbottita anatomicamente, removibile, EES Easy Entry System
- Plantare Roces kid
- Lama hockey in acciaio inossidabile



NEW

D GROWTH - GROWTH COMPENSATOR



MICROMETRICAL!

# JOKEY ICE 3.0 BOY

sizes EU [26-29] [30-33] [34-37] [38-41];  
UK [9jr-11jr] [12jr-1] [1,5-3,5] [4-7];  
US [10jr-12jr] [13jr-2] [2,5-4,5] [5-8];  
MP [170-185] [190-210] [215-235] [245-260]

# MCK II H

sizes EU [25-29] [30-35] [36-40];  
UK [8jr-11jr] [12jr-2] [3-6];  
US [9jr-12jr] [13jr-3] [4-7];  
MP [160-185] [190-220] [230-255]

- ENG**
- PE shell and cuff
  - Laces, Power Strap and microadjustable buckle
  - "Growth compensator" shell and liner
  - Anatomic thermalinsulation liner
  - Stainless steel hockey blade

- DEU**
- Schale und Schaft aus PE
  - Schnürsenkeln, Power Strap, Micro Schnalle
  - "Growth Compensator": Schale und Innenschuh in der Größe verstellbar
  - Anatomisch geformter, herausnehmbarer und wärmeisolierender Innenschuh
  - Hockeychiene aus rostfreiem Stahl

- ITA**
- Scafo e gambetto in PE
  - Lacci e leva microregolabile
  - Scafo e scarpetta "Growth compensator"
  - Scarpetta anatomica e termoisolante
  - Lama hockey in acciaio inossidabile



code 450707 001

code 450707 002

ADJUSTABLE



NEW

# JOKEY ICE 3.0 GIRL

sizes EU [26-29] [30-33] [34-37] [38-41];  
UK [9jr-11jr] [12jr-1] [1,5-3,5] [4-7];  
US [10jr-12jr] [13jr-2] [2,5-4,5] [5-8];  
MP [170-185] [190-210] [215-235] [245-260]

- ENG**
- PE shell and cuff
  - Laces, Power Strap and microadjustable buckle
  - "Growth compensator" shell and liner
  - Anatomic thermalinsulation liner
  - Stainless steel figure blade

- DEU**
- Schale und Schaft aus PE
  - Schnürsenkeln, Power Strap, Micro Schnalle
  - "Growth Compensator": Schale und Innenschuh in der Größe verstellbar
  - Anatomisch geformter, herausnehmbarer und wärmeisolierender Innenschuh
  - Kunstlaufschiene aus rostfreiem Stahl

- ITA**
- Scafo e gambetto in PE
  - Lacci, Power Strap e rega microregolabil
  - Scafo e scarpetta "Growth compensator"
  - Scarpetta anatomica e termoisolante
  - Lama figura in acciaio inossidabile



code 450708 001

ADJUSTABLE



NEW

**E GROWTH - GROWTH COMPENSATOR**



1. PUSH 2. PULL 3. RELEASE

- ENG**
- PA shell and cuff
  - Two micro-adjustable memory buckles closure system
  - "Growth compensator" shell and liner
  - Removable anatomic thermal-insulation liner
  - Carbon steel hockey blade

- DEU**
- Schale und Schaft aus PA
  - Zwei feinregulierbare Memory-Schnallen
  - "Growth Compensator": Schale und Innenschuh in der Größe verstellbar
  - Anatomisch geformter, herausnehmbarer und wärmeisolierender Innenschuh
  - Hockeychiene aus Karbonstahl

- ITA**
- Scafo e gambetto in PA
  - Chiusura con due leve memory millimetriche
  - Scafo e scarpetta "Growth compensator"
  - Scarpetta estraibile anatomica e termoisolante
  - Lama hockey in acciaio-carbonio



code 450518 001



code 450518 002

ADJUSTABLE



# MCK II F

sizes EU [25-29] [30-35] [36-40];  
UK [8jr-11jr] [12jr-2] [3-6];  
US [9jr-12jr] [13jr-3] [4-7];  
MP [160-185] [190-220] [230-255]

- ENG**
- PA shell and cuff
  - Two micro-adjustable memory buckles closure system
  - "Growth compensator" shell and liner
  - Removable anatomic thermal-insulation liner
  - Carbon steel figure blade

- DEU**
- Schale und Schaft aus PA
  - Zwei feinregulierbare Memory-Schnallen
  - "Growth Compensator": Schale und Innenschuh in der Größe verstellbar
  - Anatomisch geformter, herausnehmbarer und wärmeisolierender Innenschuh
  - Kunstlaufschiene aus Karbonstahl

- ITA**
- Scafo e gambetto in PA
  - Chiusura con due leve memory millimetriche
  - Scafo e scarpetta "Growth compensator"
  - Scarpetta estraibile anatomica e termoisolante
  - Lama figura in acciaio-carbonio



code 450519 002

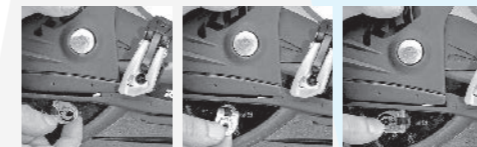


code 450519 004

ADJUSTABLE



**B GROWTH - GROWTH COMPENSATOR**



1. LIFT 2. ROTATE 3. PUSH

# ICEGLAMOUR



## TECHNICAL CHARACTERISTICS FOR ALL ICEGLAMOUR MODELS

Reinforced synthetic upper, anatomic padding, footbed, lace closure system, stainless steel blade.

Kunstlederschuh mit anatomisch geformten Verstärkungen, anatomische Polsterung, Einlegesohle, Schnürung, Schiene aus rostfreiem Stahl.

Tomaia in sintetico con rinforzi sagomati, imbottitura anatomica, plantare, chiusura a lacci, lama in acciaio inossidabile.

## PATCHWORK



**NEW**

FROM RECYCLED RECYCLABLE  
code 450712 001



ICEGLAMOUR

sizes EU 35-45; UK 2-10; US 3-11; MP 220-290

## MELANGE



**NEW**

ICEGLAMOUR

sizes EU 35-45; UK 2-10; US 3-11; MP 220-290



FROM RECYCLED RECYCLABLE  
code 450713 001

## DAMASK



**NEW**

FROM RECYCLED RECYCLABLE  
code 450573 003



ICEGLAMOUR

sizes EU 35-45; UK 2-10; US 3-11; MP 220-290

ICEGLAMOUR

# FUR INSIDE

sizes EU 35-45; UK 2-10; US 3-11; MP 220-290



Internal eco-fur



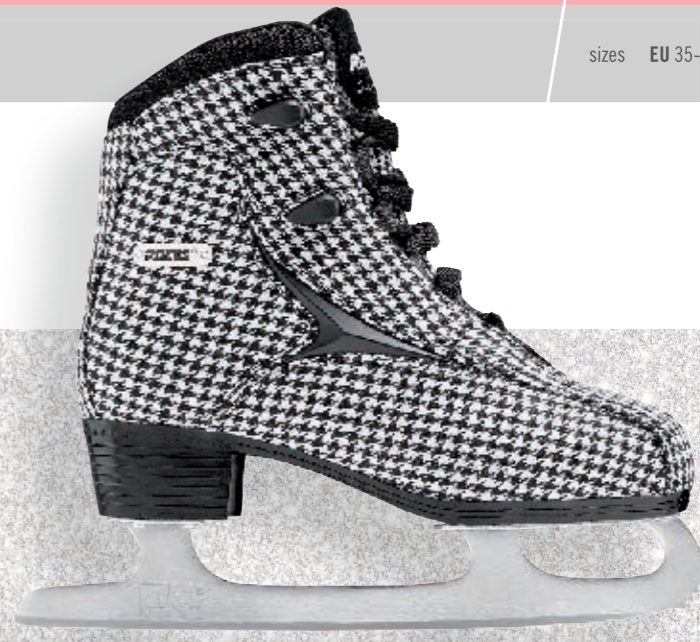
FROM RECYCLED RECYCLABLE  
code 450540 012



ICEGLAMOUR

# BRITS

sizes EU 35-45; UK 2-10; US 3-11; MP 220-290



FROM RECYCLED RECYCLABLE  
code 450557 008



ICEGLAMOUR

# SUEDE ECO FUR

sizes EU 35-45; UK 2-10; US 3-11; MP 220-290



FROM RECYCLED RECYCLABLE  
code 450702 001



ICEGLAMOUR



FROM RECYCLED RECYCLABLE  
code 450557 003

ICEGLAMOUR

# LOGGER

sizes EU 35-45; UK 2-10; US 3-11; MP 220-290



FROM RECYCLED RECYCLABLE  
code 450647 001



ICEGLAMOUR



FROM RECYCLED RECYCLABLE  
code 450557 010

ICEGLAMOUR

DENIM

sizes EU 35-45; UK 2-10; US 3-11; MP 220-290



FROM RECYCLED RECYCLABLE  
code 450662 001

ICEGLAMOUR

HIGHLANDS

sizes EU 35-45; UK 2-10; US 3-11; MP 220-290



FROM RECYCLED RECYCLABLE  
code 450661 002

ICEGLAMOUR

CAJE

sizes EU 35-45; UK 2-10; US 3-11; MP 220-290



FROM RECYCLED RECYCLABLE  
code 450662 002

FROM RECYCLED RECYCLABLE  
code 450617 001



ICEGLAMOUR

PARDUS

ICEGLAMOUR

sizes EU 35-45; UK 2-10; US 3-11; MP 220-290



FROM RECYCLED RECYCLABLE  
code 450650 001

CAMO

ICEGLAMOUR

sizes EU 35-45; UK 2-10; US 3-11; MP 220-290



FROM RECYCLED RECYCLABLE  
code 450626 003

NEW



ICEGLAMOUR

# REPTILE

sizes EU 35-45; UK 2-10; US 3-11; MP 220-290



FROM RECYCLED RECYCLABLE  
code 450540 008

ICEGLAMOUR / MAN

# SLAPSHOT

sizes EU 28-47; UK 10, 5jr-12;  
US 11, 5jr-13; MP 180-305



FROM RECYCLED RECYCLABLE  
code 450703 001

ICEGLAMOUR

# CROCO BOOT

sizes EU 35-45; UK 2-10; US 3-11; MP 220-290



FROM RECYCLED RECYCLABLE  
code 450565 001

FROM RECYCLED RECYCLABLE  
code 450703 002



sizes EU 26-45; UK 9jr-10; US 10jr-11; MP 170-290

# HEAVEN / HEAVEN BOOT

- ENG**
- Leather upper, leather tongue
  - Tongue Antitorsion System
  - ACP Antitendinitis Collar Padding
  - Anatomical footbed
  - LLH Long Lasting Hooks
  - Leather sole
  - Smooth lace closure system
  - (Stainless steel figure blade)

- DEU**
- Lederschuh und Lederzunge
  - Tongue Antitorsion System
  - ACP Antitendinitis Collar Padding
  - Anatomische Einlegesohle
  - LLH Long Lasting Hooks
  - Leder sole
  - Schnürung
  - (Kunstlaufschiene aus rostfreiem Stahl)

- ITA**
- Tomaia in pelle; lingua in pelle
  - Tongue Antitorsion System
  - ACP Antitendinitis Collar Padding
  - Plantare anatomico
  - LLH Long Lasting Hooks
  - Suola in cuoio
  - Chiusura lacci
  - (Lama figura in acciaio inossidabile)



FROM RECYCLED RECYCLABLE  
code 450632 002 (blade)  
code 450633 002 (boot)

FROM RECYCLED RECYCLABLE  
code 450632 001 (blade)  
code 450633 001 (boot)

# FIGURE

## BENEFITS OF HEAVEN & WELKIN



1. ATC ANTI-TENDINITIS COLLAR

2. ANATOMICAL FOOTBED

6. BLADE-WHEEL VERSATILITY

3. AWH ANTI-WEAR HOOKS

4. TCH TONGUE CENTRAL ANTI-TORSION HOOK

5. FFE FAST FLOWING EYELET

sizes EU 26-45; UK 9jr-10; US 10jr-11; MP 170-290

# WELKIN / WELKIN BOOT

- ENG**
- Leather upper, leather tongue
  - Tongue Antitorsion System
  - ACP Antitendinitis Collar Padding
  - Anatomical footbed
  - LLH Long Lasting Hooks
  - PVC sole
  - Smooth lace closure system
  - (Stainless steel figure blade)

- DEU**
- Lederschuh und Lederzunge
  - Tongue Antitorsion System
  - ACP Antitendinitis Collar Padding
  - Anatomische Einlegesohle
  - LLH Long Lasting Hooks
  - Sole aus PVC
  - Schnürung
  - (Kunstlaufschiene aus rostfreiem Stahl)

- ITA**
- Tomaia in pelle; lingua in pelle
  - Tongue Antitorsion System
  - ACP Antitendinitis Collar Padding
  - Plantare anatomico
  - LLH Long Lasting Hooks
  - Suola in PVC
  - Chiusura lacci
  - (Lama figura in acciaio inossidabile)



FROM RECYCLED RECYCLABLE  
code 450638 002 (blade)  
code 450639 002 (boot)

FROM RECYCLED RECYCLABLE  
code 450638 001 (blade)  
code 450639 001 (boot)

# PARADISE PLUS

FIGURE

sizes EU 25-45; UK 8jr-10; US 9jr-11; MP 165-290

**ENG**

- Action leather
- PVC sole
- Lace closure system
- Microfibre lining
- Anatomic footbed
- Stainless steel figure blade

**DEU**

- Lederschuh „Action“
- Sohle aus PVC
- Schnürung
- Futter aus Microfibre
- Anatomische Einlegesohle
- Kunstlaufschiene aus rostfreiem Stahl

**ITA**

- Pelle "Action"
- Suola in PVC
- Chiusura a lacci
- Fodera in microfibra
- Plantare anatomico
- Lama figura in acciaio inossidabile



FROM RECYCLED RECYCLABLE  
code 450634 002

FROM RECYCLED RECYCLABLE  
code 450634 001

FIGURE

# NIRVANA

sizes EU 25-45; UK 8jr-10; US 9jr-11; MP 165-290

**ENG**

- Synthetic upper; synthetic tongue
- PVC sole
- Lace closure system
- Synthetic lining
- Anatomic footbed
- Stainless steel figure blade

**DEU**

- Kunstlederschuh
- Sohle aus PVC
- Schnürung
- Synthetikfutter
- Anatomische Einlegesohle
- Kunstlaufschiene aus rostfreiem Stahl

**ITA**

- Tomaia e lingua in materiale sintetico
- Suola in PVC
- Chiusura a lacci
- Fodera in materiale sintetico
- Plantare anatomico
- Lama figura in acciaio inossidabile



FROM RECYCLED RECYCLABLE  
code 450701 001

FIGURE

# PARADISE

sizes EU 25-45; UK 8jr-10; US 9jr-11; MP 165-290

**ENG**

- Synthetic upper; synthetic tongue
- PVC sole
- Lace closure system
- Synthetic lining
- Anatomic footbed
- Stainless steel figure blade

**DEU**

- Kunstlederschuh
- Sohle aus PVC
- Schnürung
- Synthetikfutter
- Anatomische Einlegesohle
- Kunstlaufschiene aus rostfreiem Stahl

**ITA**

- Tomaia e lingua in materiale sintetico
- Suola in PVC
- Chiusura a lacci
- Fodera in materiale sintetico
- Plantare anatomico
- Lama figura in acciaio inossidabile



FROM RECYCLED RECYCLABLE  
code 450635 002

FROM RECYCLED RECYCLABLE  
code 450635 001

FIGURE

# PARADISE ECO-FUR

sizes EU 25-45; UK 8jr-10; US 9jr-11; MP 165-290

**ENG**

- Synthetic upper; synthetic tongue
- PVC sole
- Lace closure system
- Synthetic lining
- Anatomic footbed
- Stainless steel figure blade

**DEU**

- Kunstlederschuh
- Sohle aus PVC
- Schnürung
- Synthetikfutter
- Anatomische Einlegesohle
- Kunstlaufschiene aus rostfreiem Stahl

**ITA**

- Tomaia e lingua in materiale sintetico
- Suola in PVC
- Chiusura a lacci
- Fodera in materiale sintetico
- Plantare anatomico
- Lama figura in acciaio inossidabile



FROM RECYCLED RECYCLABLE  
code 450704 001



# HOCKEY

## HOCKEY

### RH4

sizes EU 28-47; UK 10, 5jr-12;  
US 11,5jr-13; MP 180-305

#### ENG

- Reinforced nylon upper, felt tongue, anatomic padding
- Anatomic felt footbed
- Lace closure system
- Stainless steel hockey blade

#### DEU

- Schuh in Nylon mit anatomisch geformten Verstärkungen, Zunge aus Filz; anatomische Polsterung
- Einlegesohle aus Filz, anatomisch geformt
- Schnürung
- Hockeyschiene aus rostfreiem Stahl

#### ITA

- Tomaia in sintetico con rinforzi sagomati; lingua in feltro; imbottitura anatomica
- Plantare in feltro anatomico ed estraibile
- Chiusura a lacci
- Lama hockey in acciaio inossidabile



## HOCKEY

### FACEOFF

sizes EU [28-31] [32-35] [36-39];  
UK [10,5-12,5jr] [13jr-2] [3-5];  
US [11,5jr-13,5jr] [1-3] [4-6];  
MP [180-200] [205-220] [230-250]

#### ENG

- Reinforced nylon upper, felt tongue, anatomic padding
- Anatomic felt footbed
- Lace closure system
- Stainless steel hockey blade

#### DEU

- Schuh in Nylon mit anatomisch geformten Verstärkungen, Zunge aus Filz; anatomische Polsterung
- Einlegesohle aus Filz, anatomisch geformt
- Schnürung
- Hockeyschiene aus rostfreiem Stahl

#### ITA

- Tomaia in sintetico con rinforzi sagomati; lingua in feltro; imbottitura anatomica
- Plantare in feltro anatomico ed estraibile
- Chiusura a lacci
- Lama hockey in acciaio inossidabile



## ADJUSTABLE

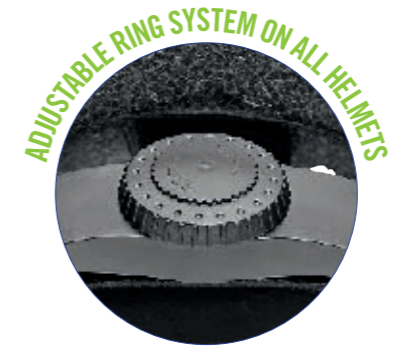


SIZE  
ADJUSTMENT  
SYSTEM

# ACCESSORIES



**AGGRESSIVE HELMET**  
300756  
Sizes: S 48-52 / M 54-56 / L 58-60  
1 Mat Red - 2 Mat White - 5 Mat Black - 8 Mat Deep Pink - 10 Mat Blue



ADJUSTABLE RING SYSTEM ON ALL HELMETS

**SNOW WRISTGUARD ULTRA THIN**  
301381 Sizes: S-L



ULTRA THIN



**FIREICE BASIC BAG**  
30610 Sizes: M (8 UK) L (12UK) • 1 Black



**FLAMES 5.0 BAG TO CARRY SKATES**  
30581 Sizes: M (8 UK)



**BUTTERFLY BAG**  
30620 Sizes: M (8 UK) • 1 White/Pink



**ICE CLUB BAG TO CARRY SKATES**  
30445 1 Black - 2 White



**RETRO BAG TO CARRY SKATES**  
30447 2 White/Blue/Red



**BRITS BAG TO CARRY SKATES**  
30357 1 Check



**INLINE SKATES RUCKSACK 1**  
30254 3 Red/Grey



**ICE CLUB BAG**  
30446 1 Black - 2 White



HOCKEYPUCK  
30774



JUNIOR BLADE  
REPLACEMENT  
30780

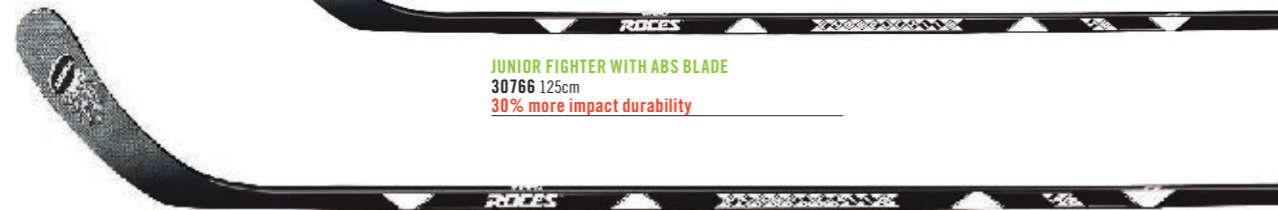


SENIOR BLADE  
REPLACEMENT  
30781

FIGHTER GOALKEEPER  
30763



JUNIOR FIGHTER WITH ABS BLADE  
30766 125cm  
30% more impact durability



SENIOR FIGHTER WITH ABS BLADE  
30767 152cm right / left  
30% more impact durability



FIGHTER SENIOR VFS  
30762 left

BLADE COVERS



BLADE COVER  
30200 2C  
32 white/black  
33 white/metallic blue  
34 white/shining pink  
35 white/gold  
36 black/gold



BLADE COVER  
30200  
1 black - 2 white - 3 silver - 6 blue - 8 gold - 11 chocolate  
16 ice - 17 lime - 18pink - 20 sand



HOCKEY BLADE COVER  
31028



BLADE COVER BOX  
30088  
(20 pcs) Mixed colors

# RENTAL



## RX DUE / RX TRE

### HIGH GRADE POLYURETHANE

Lasts up to twice as long and is resistant to impact and wear and tear.

### MICRO-ADJUSTABLE BUCKLE & REAR ENTRY

Fitting made easy thanks to the one buckle closure and rear entry.

### LINER

Removable liner, quick drying, 360° lining for a total comfort sensation.

## ORIGINALE

### HIGH GRADE POLYURETHANE

Lasts up to twice as long and is resistant to impact and wear and tear.

### THREE-MICROADJUSTABLE BUCKLES

Sturdy and comfortable three-buckle closure micrometrically adjustable.

### LINER

Removable liner, quick drying, 360° lining for a total comfort sensation.

## MCK II H / MCK II F

### POLYAMIDE, THE GUARANTEE FOR SUCCESS

Only company proposing the top quality of PA6 shell and cuff in the rental line.

### PATENTED GROWTH COMPENSATOR SYSTEM

Easy, quick, precise tool-free size adjustment system; inventory friendly.

### LINER

Removable liner, quick drying, self-adjusting, 360° lining for a total comfort sensation.

## RX DUE / RX DUE S.I.

sizes EU 25-48; UK 8jr-13; US 9jr-14; MP 165-310

DEVELOPED FOR SYNTHETIC ICE

- ENG**
- HGPU shell and cuff
  - Rear entry model
  - One micro-adjustable buckle closure system
  - Removable anatomic thermal-insulation liner
  - **RX DUE:** stainless steel hockey blade
  - **RX DUE S.I.:** carbon steel hockey blade 58 HRC

- DEU**
- Schale und Schaft aus High Grade Polyurethan
  - Heckeinstieg
  - Verschluss durch eine feinregulierbare Schnalle
  - Anatomisch geformter, herausnehmbarer und wärmeisolierender Innenschuh
  - **RX DUE:** hockeyschiene aus rostfreiem Stahl
  - **RX DUE S.I.:** hockeyschiene aus Karbonstahl 58 HRC

- ITA**
- Scafo e gambetto in HGPU
  - Entrata posteriore
  - Chiusura con leva micrometrica
  - Scarpetta anatomica estraibile termoisolante
  - **RX DUE:** lama hockey in acciaio inossidabile
  - **RX DUE S.I.:** lama hockey in acciaio-carbonio 58 HRC



code 150823 004

code 150823 002

code 150830 001

## RX TRE / RX TRE S.I.

sizes EU 25-46; UK 8jr-11; US 9jr-12; MP 165-295

DEVELOPED FOR SYNTHETIC ICE

- ENG**
- HGPU shell and cuff
  - Rear entry model
  - One micro-adjustable buckle closure system
  - Removable anatomic thermal-insulation liner
  - **RX TRE:** stainless steel figure blade
  - **RX TRE S.I.:** carbon steel figure blade 58 HRC

- DEU**
- Schale und Schaft aus High Grade Polyurethan
  - Heckeinstieg
  - Verschluss durch eine feinregulierbare Schnalle
  - Anatomisch geformter, herausnehmbarer und wärmeisolierender Innenschuh
  - **RX TRE:** kunstlaufschiene aus rostfreiem Stahl
  - **RX TRE S.I.:** kunstlaufschiene aus Karbonstahl 58 HRC

- ITA**
- Scafo e gambetto in HGPU
  - Entrata posteriore
  - Chiusura con leva micrometrica
  - Scarpetta anatomica estraibile termoisolante
  - **RX TRE:** lama figura in acciaio inossidabile
  - **RX TRE S.I.:** lama figura in acciaio-carbonio 58 HRC



code 150824 004

code 150824 002

code 150831 001

# ORIGINALE

RENTAL

sizes EU 36-49; UK 3-14; US 4-15; MP 230-325

- ENG**
- HGPU shell and cuff
  - Three micro-adjustable buckle closure system
  - Removable anatomic thermal-insulation liner
  - Stainless steel hockey blade
- DEU**
- Schale und Schaft aus HGPU
  - Drei feinregulierbare Schnallen
  - Anatomisch geformter, herausnehmbarer und wärmeisolierender Innenschuh
  - Hockeyschiene aus rostfreiem Stahl
- ITA**
- Scafo e gambetto in HGPU
  - Chiusura con tre leve micrometriche
  - Scarpetta anatomica estraibile e termoisolante
  - Lama hockey in acciaio inossidabile



code 150828 002

code 150828 001

RENTAL

# MCK II F

sizes EU 25-48; UK 8jr-13; US 9jr-14; MP 165-310

- ENG**
- PA shell and cuff
  - Two micro-adjustable memory buckles closure system
  - "Growth compensator" shell and liner
  - Removable anatomic thermal-insulation liner
  - Carbon steel figure blade
- DEU**
- Schale und Schaft aus PA
  - Zwei feinregulierbare Memory-Schnallen
  - "Growth Compensator": Schale und Innenschuh in der Größe verstellbar
  - Anatomisch geformter, herausnehmbarer und wärmeisolierender Innenschuh
  - Kunstlaufschiene aus Karbonstahl
- ITA**
- Scafo e gambetto in PA
  - Chiusura con due leve memory millimetriche
  - Scafo e scarpetta "Growth compensator"
  - Scarpetta estraibile anatomica e termoisolante
  - Lama figura in acciaio-carbonio



16 EU SIZES  
IN JUST  
3 SKATES

code 450519 002

code 450519 005



# MCK II H

RENTAL

sizes EU [25-29] [30-35] [36-40];  
UK [8jr-11jr] [12jr-2] [3-6];  
US [9jr-12jr] [13jr-3] [4-7];  
MP [160-185] [190-220] [230-255]

- ENG**
- PA shell and cuff
  - Two micro-adjustable memory buckles closure system
  - "Growth compensator" shell and liner
  - Removable anatomic thermal-insulation liner
  - Carbon steel hockey blade
- DEU**
- Schale und Schaft aus PA
  - Zwei feinregulierbare Memory-Schnallen
  - "Growth Compensator": Schale und Innenschuh in der Größe verstellbar
  - Anatomisch geformter, herausnehmbarer und wärmeisolierender Innenschuh
  - Hockeyschiene aus Karbonstahl
- ITA**
- Scafo e gambetto in PA
  - Chiusura con due leve memory millimetriche
  - Scafo e scarpetta "Growth compensator"
  - Scarpetta estraibile anatomica e termoisolante
  - Lama hockey in acciaio-carbonio



code 450518 002

code 450518 003

16 EU SIZES  
IN JUST  
3 SKATES



## ACCESSORIES FOR ICE RINKS



LAPPING FOR SHARPENER  
LAPPING FOR CE SHARPENER  
30350 - 30351  
200x10x32 - 200x6x32



SKATE HOLDER  
30100  
6000 Black



DIAMOND FOR SHARPENER  
30360



ANTISHOCK GEL INSERT  
20397



LACE PULLER  
P 625  
1 Black - 2 White



NEO BIOCID  
2319  
Antibacterial Spray



DISPOSABLE NON-WOVEN SOCKS  
300909 (100 pairs) - White



BOX LACES  
P 629  
(24 pcs box)



CE SHARPENER MACHINE  
30301



MULTI-TOOL  
P 628



COMPACT RIVETING MULTI-TOOL 2316  
2317 Rivets punch for compact riveting multi-tool  
2318 Eyelet punch for compact riveting multi-tool



# ROCES®

## ROCES HEADQUARTERS

### ROCES S.R.L.

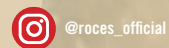
Via Galileo Ferraris, 36, I - 31044 Montebelluna - TV  
(T) 0039 0423 287 6 - (F) 0039 0423 287 799  
(E) info@roces.it

### ROCES USA, INC

10 Technology Drive Unit 1B, West Lebanon, NH 03784  
(T) 603 298 21 37 - (F) 603 298 21 39  
(E) customerservice@rocesusa.com

### DEUTSCHLAND

Wieder Consulting - Roces Deutschland  
Postfach 13 21, 82142 Planegg  
(T) 089 864 666 80 - (F) 089 864 666 81  
(E) kontakt@roces-schuh.de



© ROCES 2020 This publication may not be reproduced in any form without written permission from ROCES s.r.l.  
The trademark “乐喜士” (China trademark) is property of Roces S.r.l.

**roces.com**

**Product photography:**  
Carlo Bazan

**Color Separation:**  
Grafiche Antiga

**Printed in Italy** by Grafiche Antiga

  
stampato  
con il sole

