

ROCES[®]

Inspired by **Winter**

*IDEA Ski Boots + Ice Skates
GREEN CORE COLLECTION*

INDEX

IDEA SIZE ADJUSTABLE SKI BOOT

- 4 THE IDEA REVOLUTION
- 6 TECH OVERVIEW
- 8 SIZES AND BENEFITS
- 10 IDEA UP 16.0 - 18.5
- 11 IDEA UP 19.0 - 22.0
- 12 IDEA FREE 22.5 - 25.5
- 13 IDEA RENTAL & P.O.P.

ICE SKATE COLLECTION

- 16 RECYCLE LINE
- 18 SPORT & LEISURE
- 22 KIDS
- 26 ICEGLAMOUR
- 34 FIGURE
- 38 HOCKEY
- 40 ACCESSORIES
- 44 RENTAL

THE "R CUBE" CONCEPT: HOW WE SKATE THE PLANET



REDUCE REUSE RECYCLE

A brand new product program gets a special boost today inspired by the triple **R** of **Reduce, Reuse, Recycle**. Reduction of waste with packaging optimization, reuse of materials for lining, liners, shells, gradual introduction of recycled materials in all the product lines.

WHAT WE DO NOW

Introduction of the RECYCLE line in the ice skate collection (that means use of recycled PET, PU and recycled foams for padding).

Introduction of havana cardboard packaging (and no plastic film coating) and low ink consumption. Today's percentage of recycled cardboard is around 80%.

Ice skate blade covers (meaning the ones coming with the product in the box) made of 100% recycled plastic.

WHAT WE DID

Continuous use of recycled polyurethane for the black skate production (since 1978).

Size adjustability as a market standard for inline and ice skates and recently for junior ski boots, a typical «more with less» design case: less plastic, less waste, dramatically lower impact on transport and logistics.

Milestones:
[1978] First ice skate made in plastic and it's 100% recycled
[1993-1994] First ever size adjustable skate
[2002] Dual skate, only one skate for inline and ice skating.
[2006] First ever size adjustable ski boot

WHAT WE WILL DO

The goal is the expansion of RECYCLE design inspiration to all product categories and to as many products as possible.

The goal is to reach soon the 100% of recycled cardboard (no plastic film coating) and even lower ink consumption.

The goal is the substitution of all polybags used for product packaging / transport with bags of sustainable material (over 1.000.000 bags less per year).

HEART FOR EARTH

We all care about our planet and the brand that introduced size adjustable skates in 1994 and IDEA size adjustable ski boot for children in 2006 is, by far, a long step forward in the battle against the proliferation of landfills.

We all need a new HEART FOR EARTH



**JUST 3 BOOTS
COVERING
FROM SIZE MP 16.0
TO SIZE MP 25.5**

**ALWAYS
THE RIGHT
SIZE**



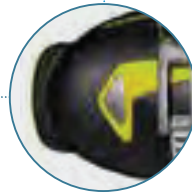
IDEA SKI BOOT OVERVIEW



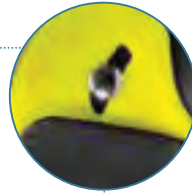
WIDTH GROWTH COMPENSATOR



LINER BELLOWS SYSTEM - LBS



SELF - SETTLING SHELL WRAP



SELF - SETTLING SHELL WRAP



MICRO ADJUSTABLE BUCKLES

ISO 5355 : 2006

QUALITY AND SAFETY

ENG: The variety of materials and technology used in manufacturing have made IDEA a high quality boot perfectly suited to introducing children to the sport of skiing in an easy, technically efficient and absolutely safe manner.

Shell: Polypropylene (PP)
Buckles: Aluminum (ALU) and Polycarbonate (PC)
Pad: Slow memory foam
Lining: Easy Entry System Lycra and velvet

ITA: Tutte le componenti che assemblano IDEA utilizzano i migliori materiali con i quali si producono gli scarponi di ultima generazione, ideati per arrivare allo sci in modo tecnicamente valido e sicuro.

Scalo: Polypropylene (PP)
Leve: Aluminum (ALU) and Polycarbonate (PC)
Imbottitura: a espumato Slow-memory foam
Fodera: Lycra per Easy Entry System, Velvet (Vellutino)

DEU: Alle Teile, aus denen IDEA besteht, sind vom besten, jeweils in der Schuhproduktion verwendeten Material gefertigt, um unseren Kindern einen bei, sicheren und technisch richtigen Einstieg in das Skifahren zu ermöglichen.

Schale: Polypropylen (PP)
Schmalen: Aluminium (ALU) und Polycarbonat (PC)
Polsterung: langsam anpassender Memory Foam
Futter: Easy Entry System Lycra und Samt

ENG: The "6 in 1" system is unbelievably easy to use: to select the right length you just need to rotate the lever placed on the lower part of the boot (close to the heel) to the chosen size.

1. Open the buckles of your boot;
2. Rotate the lever to reach the desired size;
3. Close the lever to the proper pag.

ITA: Il sistema "6 in 1" è semplicissimo: per scegliere la taglia basta ruotare un'unica leva posta nella parte bassa dello scarponcino.

1. Allentare le leve dello scarponcino;
2. Ruotare la leva di regolazione fino a raggiungere la misura desiderata;
3. Bloccare la leva di regolazione nell'apposito polo.

DEU: Das "6 in 1" Verstellsystem ist unglaublich einfach zu bedienen, um die richtige Länge auszuwählen müß man nur den Hebel, der am unteren Teil des Schuhs platziert ist (nahe der Ferse), auf die gewünschte Größe drehen.

1. Die Schmalen des Schuhs öffnen;
2. Den Hebel drehen, bis die gewünschte Größe erreicht ist;
3. Den Hebel zurücklegen um die Größe zu fixieren.

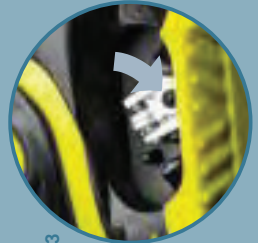
LENGTH GROWTH COMPENSATOR



1



2



3

FRA: Le système "6 en 1" est simplissime: pour choisir la taille, il suffit de faire pivoter un unique levier situé dans la partie basse de la chaussure (près du talon).

1. Ouvrir les boucles de la chaussure;
2. Tourner le levier de réglage jusqu'à la taille désirée;
3. Replacer le levier et le bloquer grâce au petit ergot.

LINER BELLOWS SYSTEM "LBS"

ENG: The staple feature of IDEA's liner is a unique adjusting system.

Unlike any other system today, the bellows allow real growth of the liner allowing for the natural development of the foot. The Liner Bellows System (LBS) has been devised to avoid any uncomfortable pressure through air parts of the foot. The bellows LBS system allows the liner to stretch to fit and to produce a fit that is secure, comfortable and long-lasting. In fact the natural resting position of the liner is with the bellows extended to the largest size (PIC. A), while shortening the bellows compress (PIC. B) into smaller sizes. It is easy to see that it is not the foot that makes the liner grow, but the shell itself.

ITA: La scarpinata di IDEA è a taglia variabile grazie al sistema LBS, basato su un soffietto a fisarmonica che rispetta la crescita del piede ed evita pressioni o altri discomfort sulle dita, sulle caviglie e sull'arco plantare. Quando lo scarfo è ragolato sulla taglia più grande, il sistema LBS si presenta a riposo e nella sua estensione massima (PIC. A); solo con l'accorciamento dello scarfo la fisarmonica si comprime (PIC. B) adattandosi alle taglie più piccole. Non è il piede ad allungare inaturalmente la scarpata, bensì l'azione dello scarfo che comprime o rilascia la fisarmonica.

DEU: Das Hauptmerkmal des größenpassungsfähigen IDEA Innenschuhs ist außergewöhnlich und einzigartig: Anders als die meisten der erhältlichen "Fake"-Systeme, die veräuchert, größenpassungsfähig zu sein, ermöglicht der IDEA Innenschuh durch ein zeitlichunabhängiges System eine einwirkende Größenverstellung, bei gleichzeitiger Platzierung der Luft in der natürlichen Ruheposition des Fußes! Das "7" Zehnhilfssystem (LBS) wurde entwickelt, um jeglichen Druck im Inneren des Zehen oder unangelegenes Gefühl wo auch immer am Fuß zu vermeiden. Tatsächlich ergibt sich immer am Fuß zu vermeinen. Tatsächlich ergibt sich das natürliche, entspannte Gefühl im Innenschuh dadurch, daß der Innenschuh in der größten Größe in der Schale eingesetzt wird (PIC. A), und sich verstell wird, zusammenfallend (PIC. B). Somit ist es leicht zu verstehen, daß nicht der Fuß Druck auf den Innenschuh ausüben muß, um die Größe zu verstellen, sondern die Schale diesen Vorgang vornimmt.

FRA: La principale caractéristique du chaussure de IDEA est un système d'ajustement unique et particulier qui, à différence de la majeure partie des «fake» systèmes de réglages disponibles aujourd'hui, utilise un soufflet compensateur permettant une vraie croissance du chaussure respectant le développement normal du pied.

Le système LBS du chaussure a été conçu avec une double objectif: être adapté à la croissance naturelle du pied. Et fait la position naturelle au repos du chaussure est représentée par un soufflet accordéon en extension maximum (PIC. A) et le rétrécissement de la coque comprime le soufflet (PIC. B) sur une taille plus petite. Ainsi il est facile de comprendre que ce n'est pas le pied qui allonge le chaussure mais l'action de la coque qui comprime ou allonge le soufflet.



PIC.A

PIC.B

THE ADJUSTABLE SKI BOOT FOR FAST GROWING KIDS.



We size our environmental impact. Multiple seasons with a single boot: longer use, less waste.

ENG The new line is coming with three different models. The IDEA UP covers sizes from 16.0 to 18.5 MP and sizes from 19.0 to 22.0 MP while the new charming IDEA FREE covers sizes from 22.5 to 25.5 MP. These three items correspond to three new lines differentiated under the closure system standpoint. The IDEA UP 16.0-18.5 is a single buckled traditional construction shelled boot while the IDEA UP 19.0-22.0 is a new two buckled boot provided with a special water shell sealing layer. IDEA FREE 22.5-25.5 is the new three buckled and cuff Power Strap strapped boot, provided with a special water shell sealing layer.



ITA L'ultima generazione di IDEA è composta da tre varianti differenti. IDEA UP copre le taglie più piccole (16.0-18.5 MP e 19.0-22.0 MP) mentre il nuovo IDEA FREE copre le taglie più grandi (22.5-25.5 MP). Queste tre varianti corrispondono ai tre nuovi modelli, che differenziano tra loro per il sistema di chiusura. IDEA UP 16.0-18.5 possiede un unico gancio di chiusura mentre IDEA UP 19.0-22.0 monta, su un nuovo scudo dotato di uno speciale inserto impermeabilizzante contro le infiltrazioni, un sistema di chiusura a due linee. IDEA FREE 22.5-25.5, infine, è dotato del medesimo scudo su alla tenuta contro le infiltrazioni e di un sistema di chiusura a compendio da tre ganci per un'ulteriore chiusura in Power Strap. La nuova linea di chiusura in Power Strap, "Water-Shell-Sealing-Layer", è già in uso.

DEU Die neue Range besteht aus drei verschiedenen Modellen. Das Modell IDEA UP deckt mit 2 Schalen die Größen MP 16.0 bis 18.5 (EU 25-29) und MP 19.0 bis 22.0 (EU 30-35) ab. Das obere Gürtelsystem von MP 22.5 bis 25.5 (EU 36-40) besitzt das Modell IDEA FREE. Diese drei neuen Modelle unterscheiden sich im wesentlichen über ihr Verschlusssystem. Die kleinste Größe, der IDEA UP (EU 25-29), ist eine traditionelle 1-Schalen-Konstruktion für Kinder, während sich die mittlere Größe (EU 30-35) als eine neue 2-Schalen-Konstruktion mit einem spezialisierten, wasserabweisenden Layer präsentiert. Das Modell IDEA FREE (EU 36-40) mit 3 Schichten und einem Power Strap-Verpressverschluss wurde völlig neu konzipiert. Auch hier kommt das "Water-Shell-Sealing-Layer" zum Einsatz.

FRA La nouvelle ligne arrive avec 3 modèles différents. IDEA UP couvre les tailles de 16.0 à 18.5 MP et 19.0 à 22.0 MP alors que IDEA FREE couvre les tailles de 22.5 à 25.5 MP. Ces trois références correspondent aux trois nouvelles lignes différentes du point de vue du système de fermeture. IDEA UP 16.0-18.5 a une construction traditionnelle et une seule boucle de fermeture, alors que IDEA UP 19.0-22.0 est une nouvelle chaussure avec double boucle de fermeture et une couche d'insertion supplémentaire au niveau de la coque. IDEA FREE 22.5-25.5 est une nouvelle chaussure avec 3 boucles de fermeture, un strap Power Strap au niveau de la cheville et une couche d'étanchéité supplémentaire au niveau de la coque.

INSPIRATIONAL DESIGN

ENG The new three lines are differentiated also under the inspiration standpoint and the design guidelines were inspired by freeride, freestyle and backcountry.

ITA La nuova generazione IDEA si differenzia dalla precedente anche dal punto di vista del design. Le linee guida di progettazione sono ispirate al free ride, al freestyle e al back country.

DEU Die drei Modelle sind in ihrem Design kategorisch unterschiedlich inspiriert. So finden sich Elemente aus Freeride, Freestyle und Backcountry.

FRA Les trois nouvelles lignes sont différentes du point de vue de l'inspiration et les lignes directrices de conception ont été inspirées par le freeride, le freestyle et le backcountry.

TOTAL PROTECTION

ENG All the new line is provided with a special water shell sealing layer that proves to be an effective barrier against water and snow. If the first generation of IDEA proved to be 100% water protective, the new one is still 100% protective with the additional guarantee of the special layer.

ITA Se la prima generazione di IDEA si è dimostrata essere al 100% resistente alle infiltrazioni, con la seconda generazione Roces siamo al 100% di garanzia con impermeabilizzante che funge da barriera contro infiltrazioni. Funzionalità e design si integrano.

DEU Alle Modelle der neuen Range sind mit einem speziellen "Water-Shell-Sealing-Layer", einer funktionalen Effektiv wasserabweisenden Schicht, gegen Wasser und Schnee ausgestattet. Nachdem bereits die erste Generation IDEA konstruktionsbedingt hoch verlässlich gegen Wasserentritt war, bietet diese neue Feature nun nochmals zusätzlichen Schutz.

FRA Toute la nouvelle ligne possède une couche d'étanchéité spéciale de la coque qui se révèle être une barrière efficace contre l'eau et la neige. Si la première génération de IDEA s'est avérée être 100% étanche à l'eau, cette nouvelle génération l'est toujours mais avec une garantie supplémentaire grâce de la couche spéciale d'étanchéité.

IMPROVED FLEX INDEX

ENG Lot of research efforts were put on bettering the flex index and the achievement is now confirmed from a fruitful cooperation with ski instructors, ski schools, and ski clubs.

ITA Con importanti risorse dedicate alla ricerca si è raggiunto l'obiettivo di migliorare il flex della scarpa anche grazie a una stretta collaborazione con maestri di sci, scuole di sci e sci club.

DEU Besondere Aufwandsanstrengungen haben wir der Optimierung des Flexverhaltens beigegeben. In Zusammenarbeit mit Skilehrern, Skischulen und Vereinen wurden die Anforderungen von Kindern und Jugendlichen präzisierender umgesetzt.

FRA Beaucoup d'efforts de recherche ont été entrepris pour améliorer l'indice flex et la réalisation est maintenant confirmée grâce à une coopération fructueuse avec les moniteurs de ski, les écoles de ski et les clubs de ski.

SAVE THE NATURAL FOOT HEAT

ENG The new warmer and anatomically padded liner has been aesthetically improved. On one side it saves the natural heat produced by the foot while skiing while on the other the liner is able to keep the foot warm also during breaks.

ITA La nuova scarpa imbottita anatomicamente è stata migliorata sia dal punto di vista estetico che in termini di tenuta del calore. La nuova conformazione della scarpa permette, infatti, di mantenere anche nei momenti di pausa il calore naturale prodotto dal nostro corpo durante l'attività fisica.

DEU Auch der Innenschuh wurde in mehrfacher Hinsicht überarbeitet. Die neue Version ist aufgrund neuer Materialien nun ästhetisch ansprechender – das Hauptaugenmerk liegt jedoch auf konstanter Wärmeabstrahlung. Die neue Konstruktion speichert die während des Fahrens anfallende Wärme im Schuh und behält sie auch während kurzer Pausen.

FRA Le nouveau chausson rembourré chaud et anatomique a été esthétiquement amélioré. D'un côté, il préserve le chaleur naturelle produite par le pied lorsque vous faites du ski et de l'autre il est en mesure de conserver la chaleur du pied aussi pendant les pauses.

SELF - SETTLING SHELL WRAP

ENG Designed and studied to improve the ankle-foot wrapping, and the progressive flexure, placed in between the frontal shell overlapping it enhances the comfort and snow stopping guarantee of the special layer.

ITA Sviluppato per migliorare l'avvolgimento attorno alla caviglia e il flex progressivo, è collocato tra scudo e scarpa e a sua volta contribuisce a migliorare la possibile infiltrazione.

DEU Der überarbeitete Schicht bietet durch seine spezielle Bauweise optimalen Halt und Schutz für das Sprunggelenk, bei gleichzeitig progressivem Flex. Er bildet die überlagende Schichttablett zur inneren Schale und Zunge und ist somit maßgeblich für den Komfort und den Schutz vor Schnee.

FRA Conçu et étudié pour améliorer la couverture cheville-pied et la flexion progressive, placé entre le mean et chevènement de la coque frontale, il améliore le confort et l'arrêt de la neige.

160	165	170	175	180	185	190	195	200	205	210	215	220	225	230	235	240	245	250	255
-----	-----	-----	-----	-----	-----	-----	-----	-----	-----	-----	-----	-----	-----	-----	-----	-----	-----	-----	-----

IDEA UP size 16.0 - 18.5 **IDEA UP** size 19.0 - 22.0 **IDEA FREE** size 22.5 - 25.5

185 ● 180 ● 160 ● 170 ● 220 ● 210 ● 190 ● 200 ● 255 ● 245 ● 235 ● 245 ● 250 ● 255



IDEA UP

SIZES 16.0 - 18.5
ADJUSTABLE

- LENGTH COMPENSATOR 6 IN 1
- WIDTH GROWTH COMPENSATOR
- SOLE LENGTH 223 mm
- LES SELF-FITTING LENGTH
- SLOW RELEASE MICROFOAM LINER FOR COMFORTABLE WALK
- SELF-ADJUSTING STRAP
- PP SHELL MATERIAL
- ALU PC BUCKLE MATERIAL
- MICRO ADJUSTABLE BUCKLE



code 450490 018
BLACK-LIME



code 450490 008
BLUE-WHITE

code 450490 009
DEEP PINK-WHITE

code 450490 015
WHITE-RED-BLACK



IDEA UP

SIZES 19.0 - 22.0
ADJUSTABLE

- LENGTH COMPENSATOR 6 IN 1
- WIDTH GROWTH COMPENSATOR
- SOLE LENGTH 253 mm
- LES SELF-FITTING LENGTH
- SLOW RELEASE MICROFOAM LINER FOR COMFORTABLE WALK
- SELF-ADJUSTING STRAP
- PP SHELL MATERIAL
- ALU PC BUCKLE MATERIAL
- MICRO ADJUSTABLE BUCKLE



code 450491 023
WHITE-TEAL



code 450491 009
DEEP PINK-WHITE

code 450491 015
WHITE-RED-BLACK

code 450491 018
BLACK-LIME

code 450491 020
WHITE-DEEP PINK

code 450491 022
BLACK-SILVER

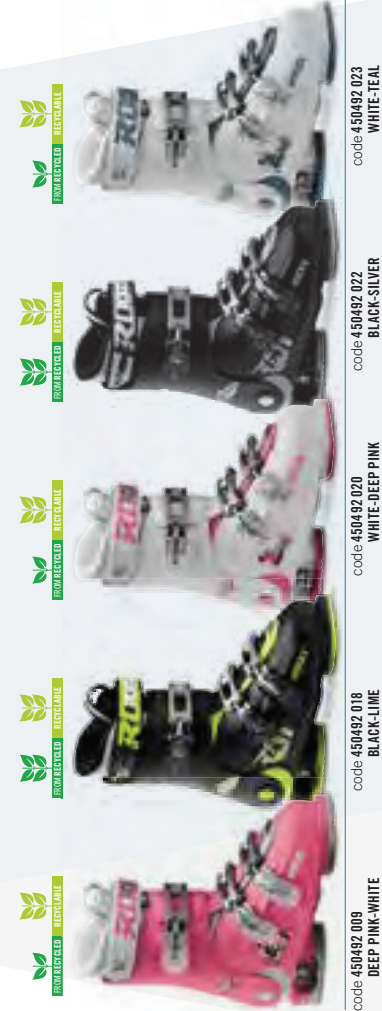
IDEA FREE

SIZES 22.5 - 25.5
ADJUSTABLE

- 252 mm HEEL TOE
- WIDTH GROWTH COMPENSATOR 6 IN 1
- SOLE LENGTH COMPENSATOR
- LENS SETTING LENG.
- 30MM SLOW RELEASE STRAP
- SELF-POSITIONING LENS/TONGUE WRAP
- SELF-SETTLING WRAP
- PP SHELL MATERIAL
- ALU PC BUCKLE MATERIAL
- MICRO ADJUSTABLE BUCKLE



code 450492 015
WHITE-RED-BLACK



code 450492 009
DEEP PINK-WHITE

code 450492 018
BLACK-LIME

code 4504 92 020
WHITE-DEEP PINK

code 4 50492 022
BLACK-SILVER

code 450492 023
WHITE-TEAL

SIZE SATISFACTION, INVENTORY FRIENDLY.

A RADICAL CHANGE FOR THE RENTAL BUSINESS.

ENG IDEA is the perfect solution for leasing and rentals. It can satisfy plenty of requests with only 3 models in stock minimizing inventory and maximizing profit.

ITA IDEA è ideale anche per il noleggio. È possibile, infatti, soddisfare tutte le richieste di taglia con solo tre modelli da tenere a magazzino. Questo permette di facilitare enormemente gli ordini e la logistica del lavoro con un risparmio di tempo e una maggiore semplicità organizzativa. E, inoltre, evita di dover neppure l'attracco degli sci a ogni noleggio.

DEU Das IDEA Konzept passt hervorragend zu Verleihern. Als Verleiher haben Sie nur drei Modelle am Lager und decken damit alle Größen ab. Sie haben einfach IMMER DIE RICHTIGE GRÖSSE AM LAGER! Sie können vermehrt den Nachtrag per Mail abgeben ohne ihr jeden Schuh der Bindung neu einstellen zu müssen.

FRA IDEA est pratique pour les loueurs, car avec 3 modèles en stock, ils peuvent satisfaire toutes les demandes et éviter à chaque location de devoir régler les fixations.

TRADITIONAL RENTAL BUSINESS MODEL



size 19.0

size 20.0

size 21.0

- COMPLEX STOCK MANAGEMENT
- NEED TO ADJUST BINDINGS
- SOME CUSTOMERS MAY NOT BE SATISFIED WITH THEIR SIZE

ROCES IDEA RENTAL BUSINESS MODEL



size 19.0 → 22.0

- EASIER STOCK MANAGEMENT
- FIXED SOLE, NO NEED TO ADJUST BINDINGS
- ALWAYS THE RIGHT SIZE

ITS SOLE MINIMIZES BINDING ADJUSTMENTS



ISO 5355 : 2006

IDEA POP



SHOP TAG

CROWNER

ICE SKATES

with an environmental attitude



ROCES' WHITE IS GREEN



THE "R CUBE" CONCEPT:
HOW WE SKATE THE PLANET



Skating with more respect >>

NEW 2021/22

REDUCE
REUSE
RECYCLE

RECYCLE LINE

Almost all the components have been studied and made with recycled and recyclable materials. A line of high-performance and completely environmentally friendly skates.



NEW

RSK 2
RECYCLE

SIZES EU 28-47; UK 10,5jr-12; US 11,5jr-13

RECYCLED RECYCLABLE
code: 450716 002

RECYCLED RECYCLABLE
code: 450716 001

- ENG**
- Upper and tongue in recycled PET
 - Anatomical padding in recycled PU fibers
 - Lace closure system and Recycled PU power strap
 - Anatomical footbed
 - Stainless steel hockey blade

- DEU**
- Obermaterial und Zunge aus recyceltem PET
 - Anatomische Polsterung aus recyceltem PU
 - Schnürsystem und Recycelte PU Power Strap
 - Anatomisches Fußbett
 - Hockeykufe aus Edelstahl

- ITA**
- Tomaia e linguetta in PET riciclato
 - Imbottitura anatomica in PU riciclato
 - Rivestimento in PET riciclato e fibre PU riciclate
 - Sistema di chiusura a lacci e Power Strap in PU riciclato
 - Plantare anatomico
 - Lama hockey in acciaio inossidabile

RECYCLED RECYCLABLE
code: 450714 002

SIZES EU 25-45; UK 8jr-10; US 9jr-11



RFG 1
RECYCLE

- ENG**
- Upper and tongue in recycled PET
 - Anatomical padding in recycled PU fibers
 - Lace closure system
 - Anatomical footbed
 - Recycled & recyclable PVC sole
 - Stainless Steel figure blade

- DEU**
- Obermaterial und Zunge aus recyceltem PET
 - Anatomische Polsterung aus recyceltem PU
 - Filter aus recyceltem PET- und PU-Fasern
 - Schweißesekel-Verschluss-System
 - Anatomisches Fußbett
 - Recycelte & recycelbare PVC-Sohle
 - Edelstahl-Kunstharthufen

- ITA**
- Tomaia e linguetta in PET riciclato
 - Imbottitura anatomica in PU riciclato
 - Sistema di chiusura a lacci
 - Plantare anatomico
 - Soletta in PVC riciclato e riciclabile
 - Lama figura in acciaio inossidabile

RECYCLED RECYCLABLE
code: 450714 001

RECYCLED RECYCLABLE
code: 450714 003

PARADISE
RECYCLE

SIZES EU 25-45; UK 8jr-10; US 9jr-11



- ENG**
- Upper and tongue in recycled PU
 - Anatomical padding in recycled PU
 - Lining in recycled PET and recycled PU fibers
 - Anatomical footbed
 - Recycled & recyclable PVC sole
 - Lace closure system
 - Stainless steel figure blade

- DEU**
- Obermaterial und Zunge aus recyceltem PU
 - Anatomische Polsterung aus recyceltem PU
 - Filter aus recyceltem PET- und PU-Fasern
 - Anatomisches Fußbett
 - Recycelte & recycelbare PVC-Sohle
 - Schnürsenkel-Verschluss-System
 - Edelstahl-Kunstharthufen

- ITA**
- Tomaia e linguetta in PU riciclato
 - Imbottitura anatomica in PU riciclato
 - Rivestimento in PET riciclato e fibre PU riciclate
 - Plantare anatomico
 - Soletta in PVC riciclato e riciclabile
 - Sistema di chiusura a lacci
 - Lama figura in acciaio inossidabile

RECYCLED RECYCLABLE
code: 450715 002

RECYCLED RECYCLABLE
code: 450715 001

ICY 3

sizes EU 36-49; UK 3-14; US 4-15



ENG

- PP+GF shell and PP cuff
- Laces with Fast Fastening, Power Strap and microadjustable Memory Buckle
- Anatomic thermal – insulation comfort liner
- Removable anatomic footbed
- Stainless steel hockey blade

DEU

- Schale aus PP+GF und Schaft aus PP
- Schürung, Power Strap und feinstufige Memory-Sohle
- Anatomisch geformter und wärmeisolierender Innerschuh
- Anatomisch geformte Einlegesohle, herausnehmbar
- Hockeischiene aus rostfreiem Stahl

ITA

- Scario in PP+GF e gambetto in PP
- Lacci, Power Strap e leva memory millimetrica
- Scarpetta confortevole anatomica e termoisolante
- Plantare anatomico estraibile
- Lama hockey in acciaio inossidabile



code 450620 003



BIG ICY

sizes EU 50-52; UK 15-17; US 16-18



ENG

- PP+GF shell and PP cuff
- Laces with Fast Fastening, Power Strap and microadjustable Memory Buckle
- Anatomic thermal – insulation comfort liner
- Removable anatomic footbed
- Stainless steel hockey blade
- Big size skate

DEU

- Schale aus PP+GF und Schaft aus PP
- Schürung, Power Strap und feinstufige Memory-Sohle
- Anatomisch geformter und wärmeisolierender Innerschuh
- Anatomisch geformte Einlegesohle, herausnehmbar
- Hockeischiene aus rostfreiem Stahl

ITA

- Scario in PP+GF e gambetto in PP
- Lacci, Power Strap e leva memory millimetrica
- Scarpetta confortevole anatomica e termoisolante
- Plantare anatomico estraibile
- Lama hockey in acciaio inossidabile



BIG SIZE SKATE



code 450680 001



SPORT & LEISURE



RFG 1

sizes EU 25-45; UK 8½-10; US 9½-11



NEW
code 450511 006

- ENG
- Reinforced synthetic upper, anatomic padding
 - Footbed
 - Lace closure system
 - Stainless steel figure blade

- DEU
- Kunstlederschuh mit anatomisch geformten Verstärkungen, anatomische Polsterung
 - Einlegesohle
 - Schnürung
 - Kunstblattschiene aus rostfreiem Stahl

- ITA
- Pinnale in sintetico con rinforzi sagomati; soletta anatomica
 - Plantare
 - Chiusura a lacci
 - Lama figura in acciaio inossidabile



RRS
code 450511 001

RSK 2

sizes EU 28-47; UK 10; 5½-12; US 11; 9½-13



RRS
code 450572 001

- ENG
- Reinforced synthetic upper, anatomic padding
 - Footbed
 - Lace and Power Strap closure system
 - Stainless steel hockey blade

- DEU
- Kunstlederschuh mit anatomisch geformten Verstärkungen, anatomische Polsterung
 - Einlegesohle
 - Schnürung und Power Strapschleife
 - Hockeyschiene aus rostfreiem Stahl

- ITA
- Pinnale in sintetico con rinforzi sagomati; imbottitura anatomica
 - Plantare
 - Chiusura a lacci con Power Strap
 - Lama hockey in acciaio inossidabile



RRS
code 450572 005

PODIO

sizes EU 28-47; UK 10; 5½-12; US 11; 9½-13



- ENG
- Reinforced synthetic upper, anatomic padding
 - Footbed
 - Lace closure system
 - Professional race blade in stainless steel

- DEU
- Kunstlederschuh mit anatomisch geformten Verstärkungen, anatomische Polsterung
 - Einlegesohle
 - Schnürung
 - Professionelle Schnellblattschiene aus rostfreiem Stahl

- ITA
- Pinnale in sintetico con rinforzi sagomati; imbottitura anatomica
 - Plantare
 - Chiusura a lacci
 - Lama professionale da velocità in acciaio inossidabile



RRS
code 450637 001

SPEED RACER

sizes EU 36-49; UK 3-14; US 4-15



- ENG
- HGRPU shell and cuff
 - Laces and micro-adjustable buckle closure system
 - Removable anatomic thermal insulation liner
 - Removable footbed
 - Professional race blade in stainless steel

- DEU
- Schale und Schaft aus High Grade Polyurethan
 - Verstellbare Schnürung und verstellbare Klettverschluss
 - Anatomisch geformter herausnehmbarer und wärmeisolierender Innerschuh
 - Einlegesohle, herausnehmbar
 - Professionelle Schnellblattschiene aus rostfreiem Stahl

- ITA
- Scario e gambetto in HGRPU a micro metrica
 - Scarpe regolabili e termoisolante
 - Plantare estraibile
 - Lama professionale da velocità in acciaio inossidabile



RRS
code 150819 001



SIZES EU [30-35] [36-40]; UK [12½-2] [3-6];
US [13½-3] [4-7]

MOODY ICE 3.0 BOY

ADJUSTABLE

MEMORY
BUCKLE
HT

ENG

- HQ Polypropylene shell (micro-adjustable)
- Memory Buckle, Power Strap, Laces
- Liner: anatomically padded, EES Easy Entry System
- Anatomical footbed
- Stainless steel Moon blade

DEU

- Schale aus Glasfaser verstärktes HQ Polypropylen
- Memory Schnalle, Power Strap, Schnürsenkel
- Innenschuh: herausnehmbar, Anatomische Polsterung, EES Easy Entry System
- Rocas Kid Einlegesohle
- Hockeyschiene aus rostfreiem Stahl

ITA

- Scario HQ polipropilene rinforzato con fibra di vetro
- Lova Memory, Power Strap, lacci
- Scarpetta: imbottita anatomicamente, removibile, EES Easy Entry System
- Plantare Rocas Kid
- Lama hockey in acciaio inossidabile



SIZES EU [30-35] [36-40]; UK [12½-2] [3-6];
US [13½-3] [4-7]

MOODY ICE 3.0 GIRL

ADJUSTABLE

MEMORY
BUCKLE
HT

ENG

- HQ Polypropylene shell (micro-adjustable)
- Memory Buckle, Power Strap, Laces
- Liner: anatomically padded, EES Easy Entry System
- Anatomical footbed
- Stainless steel Moon blade

DEU

- Schale aus Glasfaser verstärktes HQ Polypropylen
- Memory Schnalle, Power Strap, Schnürsenkel
- Innenschuh: herausnehmbar, Anatomische Polsterung, EES Easy Entry System
- Rocas Kid Einlegesohle
- Hockeyschiene aus rostfreiem Stahl

ITA

- Scario HQ polipropilene rinforzato con fibra di vetro
- Lova Memory, Power Strap, lacci
- Scarpetta: imbottita anatomicamente, removibile, EES Easy Entry System
- Plantare Rocas Kid
- Lama hockey in acciaio inossidabile



D GROWTH - GROWTH COMPENSATOR



MICROMETRICALI

JOKEY ICE 3.0 BOY

sizes EU [26-29] [30-33] [34-37] [38-41];
UK [9F-11F] [12F-1] [1.5-3.5] [4-7];
US [10F-12F] [13F-2] [2.5-4.5] [5-8]



ADJUSTABLE



code 450707 002

- ENG**
- PE shell and cuff
 - Laces, Power Strap and microadjustable buckle
 - "Growth compensator" shell and liner
 - Anatomic thermalinsulation liner
 - Stainless steel hockey blade

- DEU**
- Schale und Schaft aus PE
 - Schnürsenkel, Power Strap, Micro Schnalle
 - "Growth Compensator": Schale und Innenstuhl in der Größe verstellbar
 - Anatomisch geformtes, herausnehmbares und wärmeisolierendes Innenstuhl
 - Hockeischiene aus rostfreiem Stahl

- ITA**
- Scalo e gambetto in PE
 - Lacci e leva microregolabile
 - Scalo e scappetta "Growth compensator"
 - Scappetta anatomica e termoisolante
 - Lama hockey in acciaio inossidabile



code 450707 001

JOKEY ICE 3.0 GIRL

sizes EU [26-29] [30-33] [34-37] [38-41];
UK [9F-11F] [12F-1] [1.5-3.5] [4-7];
US [10F-12F] [13F-2] [2.5-4.5] [5-8]



ADJUSTABLE



code 450708 001

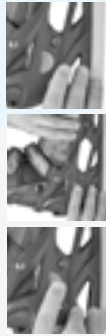
- ENG**
- PE shell and cuff
 - Laces, Power Strap and microadjustable buckle
 - "Growth compensator" shell and liner
 - Anatomic thermalinsulation liner
 - Stainless steel figure blade

- DEU**
- Schale und Schaft aus PE
 - Schnürsenkel, Power Strap, Micro Schnalle
 - "Growth Compensator": Schale und Innenstuhl in der Größe verstellbar
 - Anatomisch geformtes, herausnehmbares und wärmeisolierendes Innenstuhl
 - Kunstfaserchiene aus rostfreiem Stahl

- ITA**
- Scalo e gambetto in PE
 - Lacci, Power Strap e leva microregolabile
 - Scalo e scappetta "Growth compensator"
 - Scappetta anatomica e termoisolante
 - Lama figura in acciaio inossidabile



E GROWTH - GROWTH COMPENSATOR



1. PUSH 2. PULL 3. RELEASE

MCK II H

sizes EU [25-29] [30-35] [36-40];
UK [8F-11F] [12F-2] [3-6];
US [9F-12F] [13F-3] [4-7]



ADJUSTABLE



code 450518 001

- ENG**
- PA shell and cuff
 - Two micro-adjustable memory buckles closure system
 - "Growth compensator" shell and liner
 - Removable anatomic thermal-insulation liner
 - Carbon steel hockey blade

- DEU**
- Schale und Schaft aus PA
 - Zwei feinregulierbare Memory-Schnallen in der Größe verstellbar
 - Anatomisch geformtes, herausnehmbares und wärmeisolierendes Innenstuhl
 - Hockeischiene aus Karbonstahl

- ITA**
- Scalo e gambetto in PA
 - Chiusura con due leve memory millimetriche
 - Scalo e scappetta "Growth compensator"
 - Scappetta estraibile anatomica e termoisolante
 - Lama hockey in acciaio-carbonio



code 450518 002

MCK II F

sizes EU [25-29] [30-35] [36-40];
UK [8F-11F] [12F-2] [3-6];
US [9F-12F] [13F-3] [4-7]



ADJUSTABLE



code 450519 002

- ENG**
- PA shell and cuff
 - Two micro-adjustable memory buckles closure system
 - "Growth compensator" shell and liner
 - Removable anatomic thermal-insulation liner
 - Carbon steel figure blade

- DEU**
- Schale und Schaft aus PA
 - Zwei feinregulierbare Memory-Schnallen in der Größe verstellbar
 - Anatomisch geformtes, herausnehmbares und wärmeisolierendes Innenstuhl
 - Kunstfaserchiene aus Karbonstahl

- ITA**
- Scalo e gambetto in PA
 - Chiusura con due leve memory millimetriche
 - Scalo e scappetta "Growth compensator"
 - Scappetta estraibile anatomica e termoisolante
 - Lama figura in acciaio-carbonio



B GROWTH - GROWTH COMPENSATOR



1. LEFT 2. ROTATE 3. PUSH

ICEGLAMOUR

DAMASK

sizes EU 35-45; UK 2-10; US 3-11



code 450573 003

ICEGLAMOUR

sizes EU 35-45; UK 2-10; US 3-11



code 450702 001

SUEDE ECO FUR

TECHNICAL CHARACTERISTICS FOR ALL ICEGLAMOUR MODELS

Reinforced synthetic upper, anatomic padding, footbed, lace closure system, stainless steel blade.

Kunstlederschuh mit anatomisch geformten Verstärkungen, anatomische Polsterung, Einlegesohle, Schnürung, Schiene aus rostfreiem Stahl.

Tomaia in sintético con rinforzi sagomati, imbottitura anatomica, plantare, chiusura a lacci, lama in acciaio inossidabile.



ICEGLAMOUR

sizes EU 35-45, UK 2-10, US 3-11



NEW RECYCLED RECYCLABLE
code 450847 001



LOGGER



BRITS

sizes EU 35-45, UK 2-10, US 3-11



NEW RECYCLED RECYCLABLE
code 450557 008

ICEGLAMOUR

sizes EU 35-45, UK 2-10, US 3-11



NEW RECYCLED RECYCLABLE
code 450718 001



BRAIDED



NEW RECYCLED RECYCLABLE
code 450557 003



NEW RECYCLED RECYCLABLE
code 450557 010

NEW

ICEGLAMOUR

sizes EU 35-45, UK 2-10, US 3-11



FROM RECYCLED RECYCLABLE
code 450662 001

DENIM



ICEGLAMOUR

sizes EU 35-45, UK 2-10, US 3-11



FROM RECYCLED RECYCLABLE
code 450661 002

HIGHLANDS



FROM RECYCLED RECYCLABLE
code 450662 002



CAJÉ



FROM RECYCLED RECYCLABLE
code 450617 001



ICEGLAMOUR

sizes EU 35-45, UK 2-10, US 3-11



FROM RECYCLED RECYCLABLE
code 450650 001

PARDUS



ICEGLAMOUR

sizes EU 35-45, UK 2-10, US 3-11



100% RECYCLED RECYCLABLE
code 450540 008



REPTILE

ICEGLAMOUR / MAN

sizes EU 28-47, UK 10, 5jr-12, US 11, 5jr-13

SLAPSHOT



100% RECYCLED RECYCLABLE
code 450703 001



CROCO BOOT

sizes EU 35-45, UK 2-10, US 3-11



100% RECYCLED RECYCLABLE
code 450565 001



100% RECYCLED RECYCLABLE
code 450703 002

sizes EU 26-45; UK 9j-10; US 10j-11

HEAVEN HEAVEN BOOT

ENG

- Leather upper, leather tongue
- Tongue Antitorsion System
- ACP Antitendrills Collar Padding
- Anatomical footbed
- Leather sole
- LLL Long Lasting Hooks
- LLL Long Lasting Hooks
- (Stainless steel figure blade)

DEU

- Lederschu und Lederzunge
- Tongue Antitorsion System
- ACP Antitendrills Collar Padding
- Anatomische Einlegesohle
- LLL Long Lasting Hooks
- LLL Long Lasting Hooks
- (Kunstharthoschiene aus rostfreiem Stahl)

ITA

- Tomiaa in pelle, lingua in pelle
- Tongue Antitorsion System
- ACP Antitendrills Collar Padding
- LLL Long Lasting Hooks
- LLL Long Lasting Hooks
- Soletta in cuoio
- Chiusura lacci
- (Lama figura in acciaio inossidabile)



code 450632 002 (blade)
code 450633 002 (boot)



WELKIN WELKIN BOOT

ENG

- Leather upper, leather tongue
- Tongue Antitorsion System
- ACP Antitendrills Collar Padding
- Anatomical footbed
- LLL Long Lasting Hooks
- PVC sole
- Smooth lace closure system
- (Stainless steel figure blade)

DEU

- Lederschu und Lederzunge
- Tongue Antitorsion System
- ACP Antitendrills Collar Padding
- Anatomische Einlegesohle
- LLL Long Lasting Hooks
- Sohle aus PVC
- Schürung
- (Kunstharthoschiene aus rostfreiem Stahl)

ITA

- Tomiaa in pelle, lingua in pelle
- Tongue Antitorsion System
- ACP Antitendrills Collar Padding
- Plantare anatomico
- LLL Long Lasting Hooks
- Soletta in PVC
- Chiusura lacci
- (Lama figura in acciaio inossidabile)



code 450638 002 (blade)
code 450639 002 (boot)



code 450638 001 (blade)
code 450639 001 (boot)



FIGURE

BENEFITS OF HEAVEN & WELKIN



PARADISE PLUS

sizes EU 25-45; UK 8j-10; US 9j-11

- ENG**
- Action leather
 - PVC sole
 - Lace closure system
 - Microfibre lining
 - Anatomic footbed
 - Stainless steel figure blade

- DEU**
- Leinwandschuh „Action“
 - Sohle aus PVC
 - Schürmung
 - Fitter aus Microfibre
 - Anatomische Einlegesohle
 - Kunsttafuschiene aus rostfreiem Stahl

- ITA**
- Palle "Action"
 - Suola in PVC
 - Chiusura a lacci
 - Fodera in microfibra
 - Plantare anatomico
 - Lama figura in acciaio inossidabile



code 450634 001



code 450634 002

- ENG**
- Synthetic upper, synthetic tongue
 - PVC sole
 - Lace closure system
 - Synthetic lining
 - Anatomic footbed
 - Stainless steel figure blade

- DEU**
- Kunstlederschuh
 - Sohle aus PVC
 - Schürmung
 - Synthetikfitter
 - Anatomische Einlegesohle
 - Kunsttafuschiene aus rostfreiem Stahl

- ITA**
- Tomiaa e lingua in materiale sintetico
 - Suola in PVC
 - Chiusura a lacci
 - Fodera in materiale sintetico
 - Plantare anatomico
 - Lama figura in acciaio inossidabile



code 450701 001

NIRVANA

sizes EU 25-45; UK 8j-10; US 9j-11

- ENG**
- Synthetic upper, synthetic tongue
 - PVC sole
 - Lace closure system
 - Synthetic lining
 - Anatomic footbed
 - Stainless steel figure blade

- DEU**
- Kunstlederschuh
 - Sohle aus PVC
 - Schürmung
 - Synthetikfitter
 - Anatomische Einlegesohle
 - Kunsttafuschiene aus rostfreiem Stahl

- ITA**
- Tomiaa e lingua in materiale sintetico
 - Suola in PVC
 - Chiusura a lacci
 - Fodera in materiale sintetico
 - Plantare anatomico
 - Lama figura in acciaio inossidabile



code 450635 001



code 450635 002

PARADISE

sizes EU 25-45; UK 8j-10; US 9j-11

- ENG**
- Synthetic upper, synthetic tongue
 - PVC sole
 - Lace closure system
 - Synthetic lining
 - Anatomic footbed
 - Stainless steel figure blade

- DEU**
- Kunstlederschuh
 - Sohle aus PVC
 - Schürmung
 - Synthetikfitter
 - Anatomische Einlegesohle
 - Kunsttafuschiene aus rostfreiem Stahl

- ITA**
- Tomiaa e lingua in materiale sintetico
 - Suola in PVC
 - Chiusura a lacci
 - Fodera in materiale sintetico
 - Plantare anatomico
 - Lama figura in acciaio inossidabile



PARADISE ECO-FUR

sizes EU 25-45; UK 8j-10; US 9j-11

- ENG**
- Synthetic upper, synthetic tongue
 - PVC sole
 - Lace closure system
 - Synthetic lining
 - Anatomic footbed
 - Stainless steel figure blade

- DEU**
- Kunstlederschuh
 - Sohle aus PVC
 - Schürmung
 - Synthetikfitter
 - Anatomische Einlegesohle
 - Kunsttafuschiene aus rostfreiem Stahl

- ITA**
- Tomiaa e lingua in materiale sintetico
 - Suola in PVC
 - Chiusura a lacci
 - Fodera in materiale sintetico
 - Plantare anatomico
 - Lama figura in acciaio inossidabile



code 450704 001

sizes EU 28-47; UK 10; 5jr-12; US 11,5jr-13

RH4

ENG

- Reinforced nylon upper, felt tongue, anatomic padding
- Anatomic felt footbed
- Lace closure system
- Stainless steel hockey blade

DEU

- Schuh in Nylon mit anatomisch geformten Verstärkungen, Zunge aus Filz, anatomische Polsterung
- Einlegesohle aus Filz, anatomisch geformt
- Schnürung
- Hockeyschiene aus rostfreiem Stahl

ITA

- Tomaia in Nylon con rinforzi sagomati, lingua in feltro, imbottitura anatomica
- Plantare in feltro anatomico ed estraibile
- Chiusura a lacci
- Lama hockey in acciaio inossidabile



code: 450598 001



sizes EU 28-31|32-35|36-39|
UK 10,5-12,5jr|13jr-2|3-5|;
US 11,5jr-13,5jr|14-3|14-6|

FACEOFF

ENG

- Reinforced nylon upper, felt tongue, anatomic padding
- Anatomic felt footbed
- Lace closure system
- Stainless steel hockey blade

DEU

- Schuh in Nylon mit anatomisch geformten Verstärkungen, Zunge aus Filz, anatomische Polsterung
- Einlegesohle aus Filz, anatomisch geformt
- Schnürung
- Hockeyschiene aus rostfreiem Stahl

ITA

- Tomaia in sintealco con rinforzi sagomati, lingua in feltro, imbottitura anatomica
- Plantare in feltro anatomico ed estraibile
- Chiusura a lacci
- Lama hockey in acciaio inossidabile

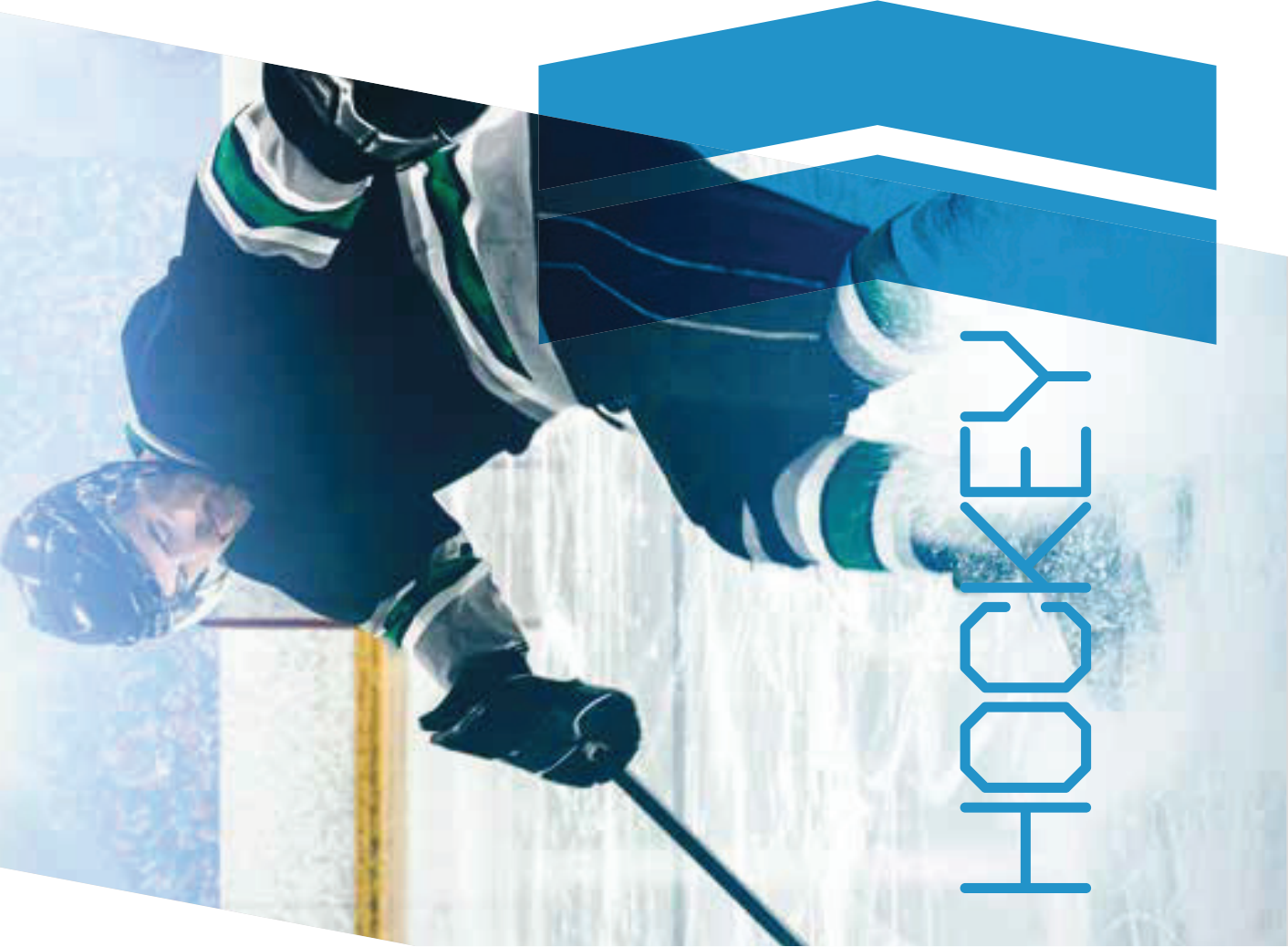
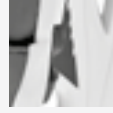


code: 450638 001



ADJUSTABLE

SIZE
ADJUSTMENT
SYSTEM



HOCKEY

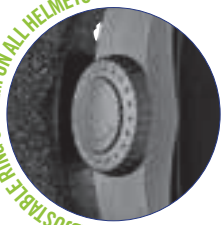


ACCESSORIES



AGGRESSIVE HELMET
300756
 Sizes: S-8 / S-9 / M-54-56 / L-58-60
 1. Mat Red - 2. Mat White - 3. Mat Black - 8. Mat Deep Pink - 10. Mat Blue

ADJUSTABLE RING SYSTEM ON ALL HELMETS



SNOW WRISTGUARD ULTRA THIN
301381 Sizes: S-L



ULTRA THIN



FIRE ICE BASIC BAG
301618 Sizes: M (6), U (6), L (12) (UK) • 1. Black



FLAMES 5.0 BAG TO CARRY SKATES
305991 Sizes: M (8) (UK)



BUTTERFLY BAG
306250 Sizes: M (8) (UK) • 1. White/Pink



ICE CLUB BAG TO CARRY SKATES
304491 Black - 2. White



RETRO BAG TO CARRY SKATES
304472 Winter/Blue/Red



ROYAL BAG TO CARRY SKATES
303571 Check



INLINE SKATES RUCKSACK 1
302543 Red/Grey



ICE CLUB BAG
304446 1. Black - 2. White



HOCKEY PUCK
30774

FIGHTER GOALKEEPER
30768



BLADE COVERS



BLADE COVER
30200 2C
32 white/black
33 white/metallic blue
34 white/shining pink
35 white/gold
36 black/gold

FROM RECYCLED RECYCLABLE
code 30200 2C



BLADE COVER
30200
1 black - 2 white - 3 silver - 6 blue - 8 gold - 11 chocolate
16 ice - 17 lime - 18pink - 20 sand - 37 violet

FROM RECYCLED RECYCLABLE
code 30200



JUNIOR FIGHTER WITH ABS BLADE
30766 125cm
30% more impact durability



SENIOR FIGHTER WITH ABS BLADE
30767 152cm right / left
30% more impact durability



FIGHTER SENIOR VFS
30762 left



HOCKEY BLADE COVER
31028



BLADE COVER BOX
30088
(20 pcs) Mixed colors



RENTAL

RX DUE / RX DUE S.I.

sizes EU 25-48; UK 9j-13; US 9j-14

DEVELOPED FOR SYNTHETIC ICE

ENG

- HGPU shell and cuff
- Rear entry model
- One micro-adjustable buckle closure system
- Removable anatomic thermal-insulation liner
- **RX DUE**: stainless steel hockey blade, 58 HRC
- **RX DUE S.I.:** carbon steel hockey blade, 58 HRC

DEU

- Schale und Schaft aus High Grade Polyurethan
- Hebelnsteig
- Verschluss durch eine feinegulerbare Schalle
- Anatomisch geformter, herausnehmbarer und wärmeisolierender Innerschuh
- **RX DUE**: Hockeyschne aus rostfreiem Stahl, 58 HRC
- **RX DUE S.I.:** Hockeyschne aus Karbonstahl, 58 HRC

ITA

- Scalo e gambetto in HGPU
- Entrata posteriore
- Chiusura con leva micrometrica
- Scarpetta anatomica estraibile termoisolante
- **RX DUE**: lama hockey in acciaio inossidabile
- **RX DUE S.I.:** lama hockey in acciaio-carbonio 58 HRC



code 150823 004

code 150823 002

code 150830 001

RX DUE / RX TRE

HIGH GRADE POLYURETHANE

Lasts up to twice as long and is resistant to impact and wear and tear.

MICRO-ADJUSTABLE BUCKLE & REAR ENTRY

Fitting made easy thanks to the one buckle closure and rear entry.

LINER

Removable liner, quick drying, 360° lining for a total comfort sensation.

ORIGINALE

HIGH GRADE POLYURETHANE

Lasts up to twice as long and is resistant to impact and wear and tear.

THREE-MICROADJUSTABLE BUCKLES

Sturdy and comfortable three-buckle closure micrometrically adjustable.

LINER

Removable liner, quick drying, 360° lining for a total comfort sensation.

MCK II H / MCK II F

POLYAMIDE, THE GUARANTEE FOR SUCCESS

Only company proposing the top quality of PA6 shell and cuff in the rental line.

PATENTED GROWTH COMPENSATOR SYSTEM

Easy, quick, precise tool-free size adjustment system; inventory friendly.

LINER

Removable liner, quick drying, self-adjusting, 360° lining for a total comfort sensation.

RX TRE / RX TRE S.I.

sizes EU 25-46; UK 8j-11; US 9j-12

DEVELOPED FOR SYNTHETIC ICE

ENG

- HGPU shell and cuff
- Rear entry model
- One micro-adjustable buckle closure system
- Removable anatomic thermal-insulation liner
- **RX TRE**: stainless steel figure blade
- **RX TRE S.I.:** carbon steel figure blade 58 HRC

DEU

- Schale und Schaft aus High Grade Polyurethan
- Hebelnsteig
- Verschluss durch eine feinegulerbare Schalle
- Anatomisch geformter, herausnehmbarer und wärmeisolierender Innerschuh
- **RX TRE**: kunststahlschne aus rostfreiem Stahl
- **RX TRE S.I.:** kunststahlschne aus Karbonstahl 58 HRC

ITA

- Scalo e gambetto in HGPU
- Entrata posteriore
- Chiusura con leva micrometrica
- Scarpetta anatomica estraibile termoisolante
- **RX TRE**: lama figura in acciaio inossidabile
- **RX TRE S.I.:** lama figura in acciaio-carbonio 58 HRC



code 150824 004

code 150824 002

code 150831 001

ORIGINALE

sizes EU 36-49; UK 3-14; US 4-15

- ENG**
- HCPU shell and cuff
 - Three micro-adjustable buckle closure system
 - Removable anatomic thermal-insulation liner
 - Stainless steel hockey blade

DEU

- Schale und Schaft aus HCPU
- Drei feineinstellbare Schnallen
- Anatomisch geformter, herausnehmbarer und wärmeisolierender Innerschuh
- Hockeyschleife aus rostfreiem Stahl

ITA

- Scalo e gambetto in HCPU
- Chiusura con tre micro regolabili
- Scarpetta anatomica estraibile e termoisolante
- Lama hockey in acciaio inossidabile



code 150828.002

code 150828.001

MCK II H

sizes EU (25-29) | 30-35 | 36-40;
UK (8)r-11r | 12(r-2) | 13-6;
US (9)r-12(r) | 13(r-3) | 14-7

- ENG**
- PA shell and cuff
 - Two micro-adjustable memory buckles closure system
 - "Growth compensator" shell and liner
 - Removable anatomic thermal-insulation liner
 - Carbon steel hockey blade

DEU

- Schale und Schaft aus PA
- Zwei feineinstellbare Memory-Schnallen
- "Growth Compensator": Schale und Innerschuh in der Größe verstellbar
- Anatomisch geformter, herausnehmbarer und wärmeisolierender Innerschuh
- Hockeyschleife aus Karbonstahl

ITA

- Scalo e gambetto in PA
- Chiusura con due micro regolabili
- Scalo e scarpetta "Growth compensator"
- Scarpetta estraibile anatomica e termoisolante
- Lama hockey in acciaio-carbonio



code 450518.002

code 450518.003

sizes EU (25-29) | 30-35 | 36-40;
UK (8)r-11r | 12(r-2) | 13-6;
US (9)r-12(r) | 13(r-3) | 14-7

MCK II F

- ENG**
- PA shell and cuff
 - Two micro-adjustable memory buckles closure system
 - "Growth compensator" shell and liner
 - Removable anatomic thermal-insulation liner
 - Carbon steel figure blade

DEU

- Schale und Schaft aus PA
- Zwei feineinstellbare Memory-Schnallen
- "Growth Compensator": Schale und Innerschuh in der Größe verstellbar
- Anatomisch geformter, herausnehmbarer und wärmeisolierender Innerschuh
- Kunstschleife aus Karbonstahl

ITA

- Scalo e gambetto in PA
- Chiusura con due leve memory millimetriche
- Scalo e scarpetta "Growth compensator"
- Scarpetta estraibile anatomica e termoisolante
- Lama figura in acciaio-carbonio



code 450519.002

code 450519.005

16 EU SIZES
IN JUST
3 SKATES



LAPPING FOR SHARPENER
30390 - 30391
200x100x22 - 200x62x22



SKATE HOLDER
30100
600-Black



DIAMOND FOR SHARPENER
30300



ANTISHOCK GEL INSERT
20387



LACE PULLER
P 623
1-Black - 2-White



NEO BIOCID
2319
Antibacterial Spray



DISPOSABLE NON-WOVEN SOCKS
3009503 (100 pairs) - White
(24 pcs box)



BOX LACES
P 629
(24 pcs box)



CES SHARPENER MACHINE
30301



MULTI-TOOL
P 628



COMPACT RIVETING MULTI-TOOL 2316
2317 Rivets punch for compact riveting multi-tool
2318 Eyelet punch for compact leveling multi-tool

ROCES®

roces.com

ROCES HEADQUARTERS

ROCES S.R.L.

Via Galileo Ferraris, 36, I - 31044 Montebelluna - TV
(T) 0039 0423 287 6 - (F) 0039 0423 287 799
(E) info@roces.it

ROCES USA, INC

10 Technology Drive Unit 1B, West Lebanon, NH 03784
(T) 603 298 21 37 - (F) 603 298 21 39
(E) customerservice@rocesusa.com

DEUTSCHLAND

Wieder Consulting - Roces Deutschland
Postfach 13 21, 82142 Planegg
(T) 089 864 666 80 - (F) 089 864 666 81
(E) kontakt@roces-schuh.de

 @roces_official

 rocesofficial

 Roces_official

 rocesofficial

 Roces1952

© ROCES 2021. This publication may not be reproduced in any form without written permission from ROCES s.r.l. The trademark “乐喜士” (China trademark) is property of Roces S.r.l.

Product photography: Carlo Bazan

Color Separation: Trevisostampa
Printed in Italy by Trevisostampa